

# Tree Protection Plans for Capital Projects

## What is a Tree Protection Plan?

A Public Tree Protection Plan is necessary to prevent damage to public trees during development. It's required if construction activities are within six metres of a public tree.

A Tree Protection Plan outlines the extent of construction and details tree protection measures. It may be a report and/or a drawing.

## Why do I need a Tree Protection Plan?

The Tree Protection Plan is part of Calgary's Tree Protection Bylaw which, though independent of the development process itself, applies to development and construction activities.

## Before construction begins

The business unit project manager should contact Urban Forestry during the design phase of the project. Upon request, an Urban

Forestry Technician can meet with you on site to discuss Tree Protection Plan requirements prior to construction. Contact 311 to schedule a pre-construction meeting.

When a business unit hires a consultant to assess public trees and draft the Tree Protection Plan and tree evaluation, the consultant should first contact an Urban Forestry Technician to confirm requirements.

## Roles and responsibilities defined Project Manager

- Contact Urban Forestry during the design phase of the project
- Schedule pre-construction meeting with an Urban Forestry Technician
- Submit Tree Protection Plan
- Oversee the care of trees during construction
- Ensure all staff working on site understand the Tree Protection Plan requirements

## Our urban forest is important

Trees provide many benefits within our communities. They improve air quality by removing airborne pollutants and dust particulates from the atmosphere. Trees mitigate storm water runoff and help with erosion control. They conserve energy in the heat of summer, providing shade and relief. Aesthetically, trees enhance the urban landscape. They connect us with nature, boosting our sense of wellbeing — and property values.

## Site Supervisor

- Implement and adhere to Tree Protection Plan

## City of Calgary Urban Forestry Technician

- Provide consultation on the Tree Protection Plan
- Approve Tree Protection Plan
- Approve any work required on any public trees
- If necessary, determine compensation for public trees

## Replacement trees

When tree loss is unpreventable, Urban Forestry encourages business units to plant as many replacement trees as possible on the site according to City of Calgary policy. Doing so will eliminate or reduce compensation costs.

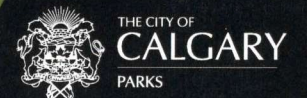
## Tree Protection Plan checklist

The following items must be included or addressed before your Tree Protection Plan can be approved. If any of the items below do not apply to your project, please indicate why.

- Description and address of the project
- The location, caliper, and species of all public trees and shrubs within six metres of activity specifying retention, removal or pruning required
- Tree protection zones – locations and sizes
- Construction materials storage area(s)
- Identify pre- and post-construction care measures such as watering, mulch and soil aeration
- Site access routes as far from public trees as possible. Anti-compaction devices should be used to minimize root damage
- Identify the limits of **any** land disturbance with construction methods and equipment to be used
- Provide contact information for a designated individual responsible for ensuring work adheres to the approved Tree Protection Plan

calgary.ca | contact 311

**Onward!** The City of Calgary is focused on protecting our air, land and water to maintain healthy ecosystems.





## Sample Site Plan

### Submitting your Tree Protection Plan

The following items must be included with your submission:

- Drawings with relevant public tree information (*See sample site plan*)
- A signed Tree Protection Plan Agreement (*download at [calgary.ca/trees](http://calgary.ca/trees)*)

### Submit to:

**Mail:** Parks Urban Forestry Tree Protection Plan  
 PO Box 2100 Station M #75  
 Calgary, AB T2P 2M5

**Fax:** 403-537-7549

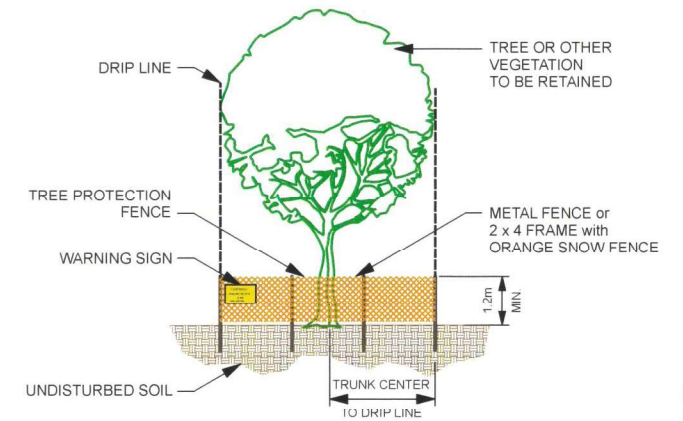
**Email:** [tree.protection@calgary.ca](mailto:tree.protection@calgary.ca)



**SITE PLAN**  
SCALE AS NOTED

	COMMON NAME	BOTANICAL NAME	DIA.	RETAIN/REMOVE
1	AMERICAN ELM	ULMUS AMERICANA	41cm	RETAIN
2	AMERICAN ELM	ULMUS AMERICANA	42cm	RETAIN & PRUNE
3	AMERICAN ELM	ULMUS AMERICANA	42cm	REMOVE
4	AMERICAN ELM	ULMUS AMERICANA	40cm	RETAIN & PRUNE
5	AMERICAN ELM	ULMUS AMERICANA	41cm	RETAIN
6	LAUREL - LEAF WILLOW	SALIX PENTANDRA	30cm	RETAIN
7	LAUREL - LEAF WILLOW	SALIX PENTANDRA	32cm	RETAIN
8	LAUREL - LEAF WILLOW	SALIX PENTANDRA	31cm	RETAIN
9	NORTHWEST POPLAR	POPULUS X JACKII 'NORTHWEST'	44cm	REMOVE
10	NORTHWEST POPLAR	POPULUS X JACKII 'NORTHWEST'	44cm	REMOVE
11	NORTHWEST POPLAR	POPULUS X JACKII 'NORTHWEST'	45cm	REMOVE
12	AMERICAN ELM	ULMUS AMERICANA	40cm	RETAIN & PRUNE
13	AMERICAN ELM	ULMUS AMERICANA	40cm	RETAIN & PRUNE

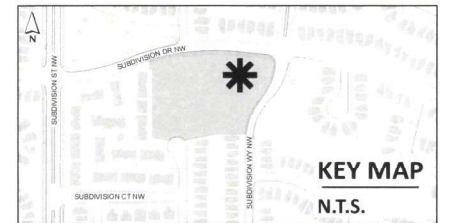
**TABLE**  
**TREES (Retain/Remove)**



**TREE PROTECTION ZONE DETAIL**  
N.T.S.

ADDRESS:  
123 SUBDIVISION DR NW  
LEGAL DESCRIPTION:  
88MR, BLOCK 8, PLAN 1518888

**SITE INFORMATION**



**KEY MAP**  
N.T.S.

 LOGO	PROJECT TITLE <b>MAINTENANCE DEPOT</b>	<b>LEGEND</b> EXISTING TREE TO REMAIN / REMAIN & PRUNE (REFER TO TABLE) EXISTING TREE TO BE REMOVED (REFER TO TABLE) EXISTING TREE, UNAFFECTED TREE PROTECTION FENCE CONSTRUCTION FENCE LIMIT OF LAND DISTURBANCE WATER MAIN & SERVICE SANITARY PIPE ENMAX CABLE ATCO (GAS) PIPE	SCALE: 1:300  TREE PROTECTION NOTES	REVISION/ADDITION DATE	BASE DRAWN BY <b>X.X.</b> DATE: 0000/00/00 APPROVED FOR: _____ TENDER	DESIGN BY <b>X.X.</b> DATE: 0000/00/00 BY _____ DATE _____
	<b>TREE PROTECTION PLAN DRAWING</b>		CHECKED BY _____ DATE _____	CONSTRUCTION	_____	