

West Eau Claire Park & Public Realm Plan

What We Heard Report

Prepared by: O2 Planning + Design Inc. (O2)

Prepared for: The City of Calgary

November 21, 2014

TABLE OF CONTENTS

TABLE OF CONTENTS	ii
1. INTRODUCTION.....	1
1.1 PUBLIC ENGAGEMENT	1
2. ISSUES, OPPORTUNITIES, DREAMS AND DESIRES ENGAGEMENT ACTIVITIES	2
2.1 STAKEHOLDER WALKING TOUR	2
2.2 STAKEHOLDER WORKSHOP #1.....	2
2.3 SOUNDING BOARD	2
2.4 POP-UP INFORMATION TABLE	3
2.5 SURVEYS.....	3
2.6 ON-LINE WEB MAP TOOL	4
3. WHAT WE HEARD.....	5
3.1 CIRCULATION AND ACCESSIBILITY.....	5
3.2 VEGETATION AND GREEN SPACE	6
3.3 AMENITIES.....	7
3.4 MAINTENANCE AND SAFETY.....	8
3.5 VISION	9
4. CONCEPT VISION + DESIGN PRIORITIES ENGAGEMENT ACTIVITIES	10
4.1 STAKEHOLDER WORKSHOPS	10
4.2 PUBLIC OPEN HOUSE	10
4.3 SOUNDING BOARDS	10
4.4 SURVEYS.....	10
5. WHAT WE HEARD.....	12
5.1 CIRCULATION AND ACCESSIBILITY.....	12
5.2 VEGETATION AND OPEN SPACES	14
5.3 AMENITIES.....	15
5.4 MAINTENANCE AND SAFETY.....	16
5.5 ADDITIONAL COMMENTS	16

1. Introduction

The City of Calgary is developing a plan for the West Eau Claire Park and adjacent public realm. The project goal is to develop a comprehensive plan that will enhance the public realm to create a more liveable, caring and thriving place.

This report summarizes what we heard from the public over the course of the “Issues, Opportunities, Dreams and Desires” and the “Concept Vision + Design Priorities” engagement periods. A detailed record of all comments received is provided in Appendix A (Phase 1) and B (Phase 2).

1.1 Public Engagement

Public engagement is critical to the success of the plan. The City of Calgary and the consulting team led by O2 Planning + Design is committed to involving stakeholders, residents, park users, adjacent property owners and businesses in planning for the future of the area. The engagement will be undertaken in 3 engagement periods, as follows:

1. Project Notification + Design Issues / Aspirations

August - September 2014

Objective: To create project awareness and seek stakeholder input on design issues and aspirations.

Promise: We will ask you to tell us what is working and what is not, and to describe your aspirations for the area. We will use this information to complete a Site Analysis Report and inform the development of a vision, guiding principles, and design alternatives.

2. Concept Vision + Design Priorities

September – October 2014

Objective: To present previous concepts and design alternatives, and seek community feedback on preferred elements and priorities.

Promise: We will confirm the design direction for the site with you by asking for input on what you like and do not like about the concept and what your priorities are. We will use this information to refine and finalize the concept. While we may not be able to respond to all concerns for safety, financial or design reasons, we will develop a concept that is consistent with your design direction.

3. Final Concept

November 2014

Objective: To present the final concept and confirm that the concept is consistent with the vision, guiding principles, and other design direction.

Promise: We will check with you to confirm that the final concept is consistent with the design direction you provided. We will listen to your input and make minor design adjustments, as required.

2. Issues, Opportunities, Dreams and Desires Engagement Activities

In August and beginning of September 2014, the project team engaged stakeholders, residents, park users, adjacent property owners and businesses to share their thoughts and ideas about the area redevelopment. Over 1,600 comments were gathered over this period.

There were many different ways to get involved.

2.1 Stakeholder Walking Tour

West Eau Claire Park | Wednesday, August 13, 2014

Stakeholder groups in attendance:

- Eau Claire Community Association
- Office of Councillor Farrell
- City of Calgary Parks
- City of Calgary, Local Area Planning & Implementation
- City of Calgary, Engagement & Communication Partner Services

The walking tour allowed the project team to meet various organized stakeholder groups with an interest in the area redevelopment and discuss issues, opportunities, and desires for the future.

2.2 Stakeholder Workshop #1

Internal Stakeholders | Wednesday, August 20, 2014

Stakeholder groups in attendance:

- City of Calgary, Local Area Planning & Implementation
- City of Calgary, Parks
- City of Calgary, Engagement & Communication Partner Services
- City of Calgary, Corporate Properties & Buildings
- City of Calgary, Calgary Parking Authority
- City of Calgary, Transportation Planning
- City of Calgary, Community & Neighbourhood Services
- Calgary Fire Department – Tech Services
- Calgary Police Service
- Office of Councillor Farrell
- Ward 8 Councillor Evan Wolley

External Stakeholders | Wednesday, August 20, 2014

Stakeholder groups in attendance:

- Eau Claire Community Association
- Bike Calgary
- Eau Claire YMCA

The first workshop was an opportunity to share initial site analysis and gather input on issues and opportunities. The second part of the workshop was dedicated to discuss preferred vision for the area.

2.3 Sounding Board

On-site Installation near Peace Bridge | August 16, 2014 – September 2, 2014

- 386 comments

A sounding board, a large semi-permanent structure installed in West Eau Claire Park, was used to gather feedback from park users. Using sticky notes, passers-by completed two simple statements and continued on their way.

The animating statements were:

- What I like about the park is...
- I wish this park ...

2.4 Pop-up Information Table

On-site information table | Saturday August 23, 2014 – Morning, Thursday August 28, 2014 – Lunch Time, September, Thursday September 4, 2014 – Early Evening

- 20 comments

An information table was set-up on-site near the sounding board to engage directly with park users.

2.5 Surveys

Online and Paper Surveys | August 18, 2014 – September 15, 2014

- 217 online surveys completed
- 36 paper surveys completed

The survey included the following questions:

- What is good about the West Eau Claire Park area?
- What changes should be made?
- Provide key words to describe your vision for the West Eau Claire Park.
- Are there any important elements/constraints you are aware of that should be considered?

2.6 On-Line Web Map Tool

On-line | August 18, 2014 – September 15, 2014

- 226 comments

The on-line web map tool allowed users to provide comments on an interactive map. The following push-pin buttons were available to provide comments:

- Great Place!
- Needs Work...
- I Have An Idea...

The information provided is stored in a geodatabase that can be accessed when refining the concept.

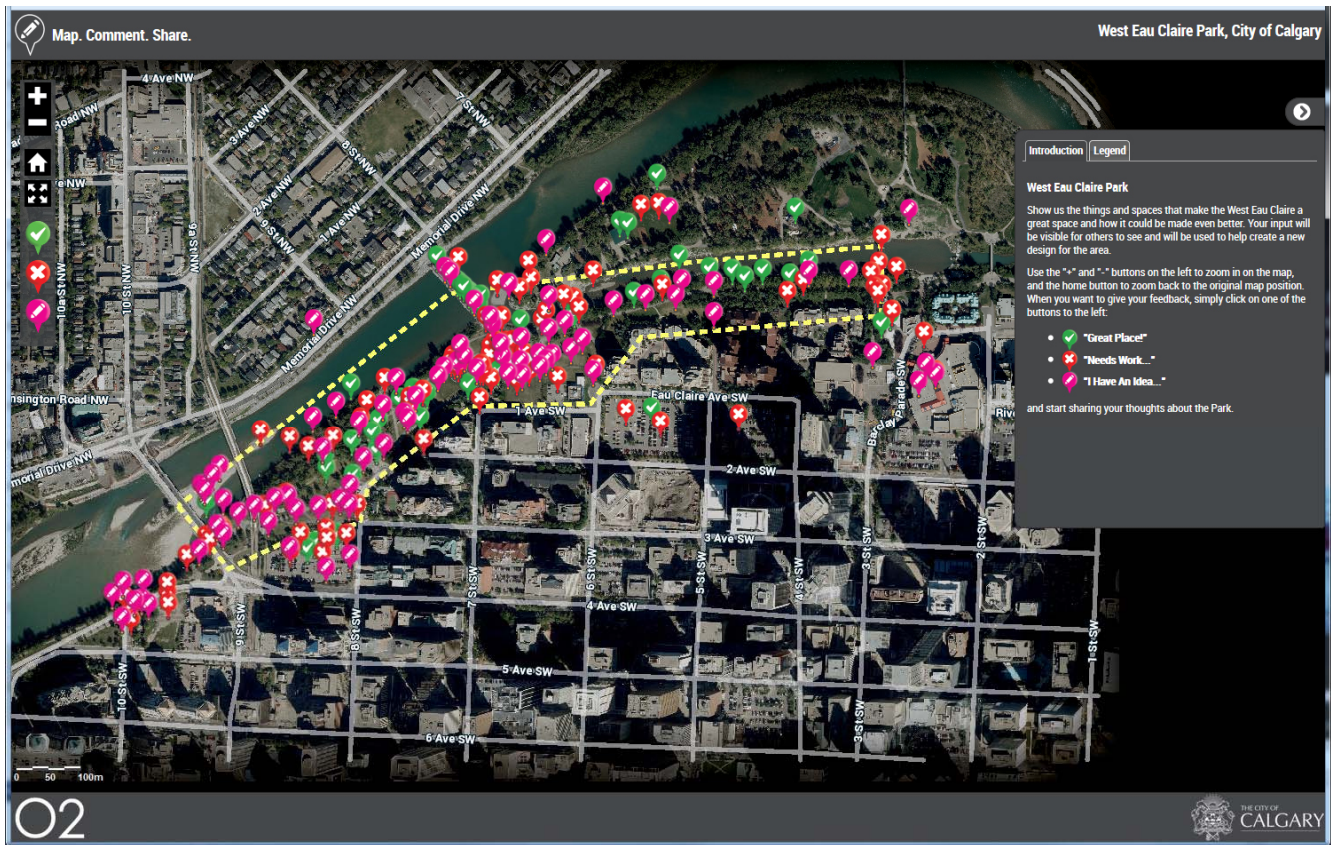


Figure 1. Web Map

3. What We Heard

The intent of this report is to highlight common themes that emerged from the first phase of the engagement. Frequently heard comments are grouped into four major themes, and summarized to highlight areas of agreement and disagreement. These themes provide useful insights for the design team around identifying shared aspirations for the area redevelopment, and identifying points of tension to be reconciled through concept design.

In addition to considering emergent themes, the report also identifies overlap and contradictions. Drawing attention to these linked themes highlights the interconnections between issues. In this way, the park concept can reflect the linkages between different design considerations and create solutions that address multiple issues at one time.

Along with the major themes, many respondents mentioned to “keep it the way it is”. These comments reveal two main ideas: the area is highly valued, and there is a fear of loss of green space to development with recent condo developments in the area. Many respondents also expressed the desire to keep the park design simple and minimize development.

3.1 Circulation and Accessibility

Circulation and accessibility refers to the way people move around and through the park. West Eau Claire Park is a critical piece of the Bow River regional pathway system. The pathway is highly used for commuting, but also for park enjoyment and recreation.

Pathway user conflicts emerged as one of the main issues to be resolved throughout this process. However, some disagreements exist on how to achieve this. The majority of respondents would like to see a separation of uses (i.e. RiverWalk in East Village), while some respondents are in favor of a multi-use pathway. In the second case, the rationale provided is that multi-use pathway tends to slow down cyclists when busy, and that conflict resolution resides in increasing enforcement and adding signage (to reduce cyclist speed).

Many areas with circulation issues were identified, such as blind corners, unsafe intersections, awkward pathway alignments, desire lines to be accommodated, etc.

Design challenges: How to integrate pedestrian and other pathway users safely and effectively while minimizing infrastructure development

We heard that respondents **value**:

- Wide pathways
- Ease of access and proximity to downtown
- Peace Bridge

We heard that respondents **want**:

- Safer pathways for all users
- Better access and circulation to the Peace Bridge
- Better pathway/cycling connections to downtown (a more direct cycling connection to the 5th street or 7th street cycle tracks)

Representative quotes:

“Pathway is extremely busy through here. Separation, like on RiverWalk, for bicycles and walking is needed.”

“Increase of cycle community means increase in bike traffic at peak times and congestion at Eau Claire”

“Shared bike/walk pathways can slow bikers”

“Balance of needs for pedestrians and cycling”

“Absolutely love the Peace Bridge, but the landscaping and access on its south side are poor.”

“Many desire lines run through here [south Peace Bridge access]. Additional pathways should be provided across the green space.”

“Have nearly been run over by bicycle commuters - they should NOT be allowed to "rip" through the area scaring everyone to death [...] Bikes MUST BE SEPARATED from the pedestrians because pedestrians can't relax knowing they can be hit by a bicyclist at any time.”

“I have to stress the pathway needs to be widened. I'm a daily bike commuter and the area can be heavily congested with walkers, runners, young children on bikes, people pushing strollers. Many people do not understand how to react to a bike bell. They should move to the right but often times they don't. Regrettably, I collided with two pedestrians on that section of path this year. People who simply refused to move to the right. The divided path through the East Village may be a model to follow.”

3.2 Vegetation and Green Space

Vegetation and green space figures as a favorite park features. The area is often described as an “oasis” of nature in an urban environment. Two distinct types of vegetation are appreciated: the natural vegetation with its mature trees, and the more ornamental vegetation with the park’s flower baskets, manicured green space, and lined trees along the pathway.

Design challenges: How to maintain natural areas while increasing sense of safety

We heard that respondents **value**:

- Natural area
- Mature trees
- Ornamental vegetation (flower basket)
- Flexible manicured green space

We heard that respondents **want**:

- Keep it green and natural
- More trees (for atmosphere and shade) and flowers
- Maintain flexible green spaces
- Attractive winter vegetation
- Relocate or integrate the helipad

Representative quotes:

“The combination of 'natural' and 'manufactured' space”

“Nice natural setting in the inner city. Plenty of trees. An urban Oasis!”

“Green Space, it is an oasis in the middle of downtown. Really nice with the flower planters and trees”

“Vast expanses of grass, the natural trees and bushes which provide a buffer between the river and the bike path”

“I think the RiverWalk should be continued, but with more emphasis on preserving the natural riverbank”

“The trees and shrubs here both provide good bird habitat, so please do not clear the entire area out due to security concerns.”

3.3 Amenities

Amenities are the activities, features and programming of the park. Generally, the existing park amenities are highly valued: from the pathways, benches, and public art, to the open spaces. Flexible open spaces emerged as the prominent features within this theme. These spaces are used for impromptu sport games or to simply linger. Many respondents are questioning the existence of the helicopter pad in the park and suggesting to relocate or to better integrate the infrastructure in the park.

The majority of the ideas focus on complementing existing uses of the site (i.e. drinking fountains for runners), and accommodating recent growing uses such as river surfing. Ideas for new amenities include: urban beach, community gardens, playgrounds, sport fields, and swimming pool. Some disagreements exist regarding if commercial activities should be allowed in the park or not. Events held in the park are also appreciated and some respondents commented on the opportunity to increase the offer.

Comments provided reveal contradictions in terms of desired type of amenities, highlighting point of tensions between park users and residents. On one side, there is a desire for an increase of amenities to support park use as a recreational corridor, and on the other side, there is a desire for a less cluttered space or for the development of community focus amenities, such as community gardens.

Design challenges: 1) How to balance the desire for more amenities and active programming while preserving the natural and flexible open space. 2) How to balance the needs and/or desires of park users and local residents

We heard that respondents **value**:

- Flexible open space
- Wide pathways
- Benches
- Public art

We heard that respondents **want**:

- Amenities that complement existing uses
 - More benches and/ places to sit
 - More public art
 - Washrooms
 - Drinking fountains
 - Outdoor fitness equipment
 - Picnic tables
 - More gathering places by the river
 - Maintain flexible green space
 - Relocate or integrate the helipad
- New amenities and/or programs:
 - Urban beach

- Food services (cafés, restaurants, food trucks and vendors)
- Playgrounds
- Community gardens
- Ability to use in winter (skating rink, warm hut, etc.)

Representative quotes:

“I'd appreciate more places to sit. Especially on weekends, seating is taken. In the shade preferably.”

“Nice open space - allows people to use whenever and however they would like...lounging, playing with their kids, etc.”

“As a resident, I think this should be maintained as open, flexible space, not cluttered up with work out space for downtown workers during their lunch hour. It should meet the needs of people that are in the area 7 days a week!”

“River surfing the new wave is a great amenity for Calgarians!! Can we make this permanent providing a structure like this: <http://www.surfanywhere.ca/>”

“Provide amenities for river surfers and viewers (seats, change areas, board holders)”

“The helicopter landing area is something that I have not seen used in the 6 years I have been going to Eau Claire Park on a daily basis. The large area this consumes when including the fenced off area interrupts the flow of the park and it would be fantastic...”

“Create more restaurant/diner/cafe/pub patio space facing the river - like River Cafe, Boxwood, or San Antonio's Riverwalk. [...]”

“Fantastic in the summer - it needs “something” so more enjoyment during the winter month (ice festival, gas heaters in some location so we can have lunch there”

3.4 Maintenance and Safety

Multiple comments were made about safety concerns regarding maintenance and undesirable use of the site. The wooded area along the river was identified as a very unsafe area. The absence of sightlines and poor lighting makes this area attractive for undesirable uses. Other maintenance and safety concerns identified were related to unsafe pathway intersections and lack of lighting along pathways. Overall, there is a general agreement within this theme.

Respondents provided a series of recommendations to resolve the safety issues associated with the undesirable uses, such as police patrol, surveillance camera, better lighting, signage, emergency phone, and better sightlines. These recommendations highlight the concept that natural surveillance improves the sense of safety as the area becomes less attractive for inappropriate behaviors or activities.

We heard that respondents **value**:

- General maintenance or “cleanness”
- Winter pathway maintenance

We heard that respondents **want**:

- Better lighting (under Louise Bridge, along the regional pathway, and adjacent to forested areas)
- Safer area – elimination of undesirable uses

4. Concept Vision + Design Priorities Engagement Activities

This phase of engagement focused on identifying preferred design strategies and priorities. In October and November, the project team presented the vision, guiding principles, and strategic design approaches, and engaged stakeholders to verify that the principles and design strategies were consistent with direction provided in phase 1.

The following engagement activities were held during phase 2.

4.1 Stakeholder Workshops

Internal Workshop | Wednesday, October 1, 2014

Stakeholder groups in attendance:

- City of Calgary - Centre City
- Calgary Fire Department – Tech Services
- Calgary Police Service
- City of Calgary – Ward 7 Councillor
- City of Calgary – Parks
- City of Calgary
- City of Calgary – Urban Design

External Workshop | Wednesday, October 1, 2014

Stakeholder groups in attendance:

- ECCA (Eau Claire Community Association)
- DTWC Association
- DWC Association

4.2 Public Open House

A public open house was held at Eau Claire Market. This drop-in event was an opportunity for the public to revise and comment the draft design concept and design strategies.

Public Open House | Tuesday, October 28, 2014, 4:00 – 8:00 pm

- Approximately 100 individual attended the event
- 28 sticky notes comments

4.3 Sounding Boards

On-site Installation near Peace Bridge | November 3 – November 14, 2014

A poster presenting a summary of “What We Heard”, the draft concept plan, and some of key elements of the concept was mounted on the sounding board structure. A QR code allowed people to provide comments via the online survey. Paper surveys were also provided.

4.4 Surveys

Online and Paper Surveys | October – November 14, 2014

- 29 paper surveys completed at the public open house

- 3 paper surveys completed at the sounding board
- 17 online surveys completed

The surveys was organized around the themes identified during phase 1. The survey included the following questions:

CIRCULATION and ACCESSIBILITY

Q1: Which of the approaches better address circulation issues and why?

1. Separate dedicated pathways for Cyclists and Pedestrians
2. Wide shared Multi-use pathways for both Cyclists and Pedestrians
3. A combination of dedicated and shared pathways in appropriate locations across the riverfront

Q2: What do you like about the proposed circulation and accessibility design strategies?

Q3: Is the design approach consistent with the direction provided?

VEGETATION and OPEN SPACE

Q4: What do you like about the vegetation and open space design strategies?

Q5: What would you change?

Q6: Is the design approach consistent with the direction provided?

MAINTENANCE and SAFETY

Q7: What do you like about the maintenance and safety design strategies?

Q8: What would you change?

Q9: Is the design approach consistent with the direction provided?

AMENITIES

Q10: What do you like about the amenities design strategies?

Q11: What would you change?

Q12: Is the design approach consistent with the direction provided?

OTHERS

Q13: Do you have any other comments on the draft concept design?

4.5 Engagement Monitoring

Participation levels through this phase of engagement were lower than during Phase 1, with approximately 380 comments provided, which is typical for this type of project as levels tend to drop off through concept development. The public open house was the most successful engagement activity with hundreds of people attending. The venue, Eau Claire Market, was convenient and appreciated by participants. The sounding board was not as successful to gather comments. This could be explained by the use of comment forms instead of post-it notes, and timing. Park use is lower in winter than in summer.

5. What We Heard

Through the second phase of engagement, the project team sought feedback on a series of guiding principles and design strategies. Recommendations were organized by themes heard during the first phase of engagement and aimed at coherently present how the input informed the design.

For each of the four themes, the following questions were used to gather feedback:

- What do you like about the design strategies?
- What would you change?
- Is the design approach consistent with the direction provided?

In general, comments suggest a good level of agreement and enthusiasm among respondents. Concerns and areas of disagreement have been highlighted. For each of these, solutions on how it could be addressed or rationale on why it could not be addressed were developed.

General comments:

“I think you have done an outstanding job of accommodating all requests. Very Happy”

“Thank you for all your hard work + communication”

“Love it! The sooner the better!”

“Good start. Try not to do so many activities in such a small space. Eau Claire Park is not that large.”

5.1 Circulation and Accessibility

Three different design approaches were proposed to resolve pathway user conflicts:

1. Separate dedicated pathways for cyclists and pedestrians
2. Wide shared multi-use pathways for both cyclists and pedestrians
3. A combination of dedicated and shared pathways in appropriate locations across the riverfront

Figure 3. shows that half of the respondents prefer option 1. Option 3 is also appreciated. Option 2 (wide shared multi-use pathway) is not widely supported.

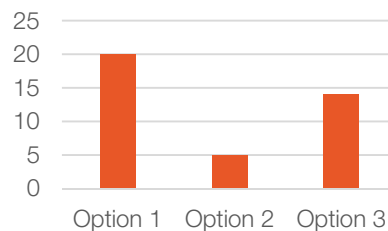


Figure 3. Results – Preferred Circulation Design Approach

The majority of respondents feel that the design approach is consistent with direction provided in Phase 1.

Respondents **like**:

- The design approach does not favor any user groups (good compromise)

- The wide pathway that creates a ‘grand’ sense is preserved
- Access to the river
- Organic forms

Respondents have **comments/concerns** about:

Comments/Concerns	How it would be addressed OR Why it can't be addressed in the revised concept
Increase of crisscrossing between cyclists and pedestrians	The number of intersections has been reduced in the final concept plan by maintaining separation between cyclists and pedestrians for the extent of the park. Where intersections do occur users will be alerted through a combination of signage, paving material changes, pavement markings, and bollards.
Need for intersection treatment such as yield signs and pavement marking	Where intersections do occur users will be alerted through a combination of signage, paving material changes, pavement markings, and bollards.
Would like see the design strategies expanded west of 7 th Street	We have extended the separation of cyclists and pedestrians through the entire park.
Straight bike pathway is better	A straighter pathway is provided. However, curves as the cycle path approaches intersections and/or mixed mode areas to slow cyclists.
The need/request for massive “gateway” structures	This is being addressed in the final concept plan.
Noise created by pathway closer to the residence at 400 and 500 Eau Claire	The distance between the cycle path and adjacent residential buildings has been maximized and balanced with the desire to maintain existing mature vegetation. Additional tree planting on the south side of the pathway will help provide a buffer between the path and buildings.
Art anchor in middle of path creates an unnecessary obstacle, and confusion about which side of it to travel on when heading East. Circle is too tight for cyclist (eastbound) to stay on right side of it	Large sculptures/site elements have been located out of the main circulation corridors.

Representative quotes:

“The idea of intermittent separation with allowing pedestrians closer access to the river is ideal.”

“I like the bike and pedestrians separation that is proposed, however I would extend the separation West of 7th Street”

“As long as people pay attention, I like 2+3 better because it encourages "mixing" more between different user types. I'm most concerned about how much "crisscrossing" there is between bike + people paths in the new proposal.”

“The circulation patterns are too forced. Users will make their own shortcuts despite your constraints.”

“I would not separate the current pathway and a new bike path moved much closer to residents at 500 and 400 Eau Claire is not desirable as it would bring more noise closer to many condo units”

“Consider traffic flow at intersections and end points. It will need to be much clearer as to how space is to be used than presented. Don't meander bike path please. Mitigate conflicts at crossing with yield (not Stop) signs and pavement markings”

5.2 Vegetation and Open Spaces

Vegetation and open space design strategies have a great level of support among respondents. Concerns relate to flooding, furniture in open space, and amount of hardscape in certain areas. The majority of respondents feel that the design approach is consistent with direction provided in Phase 1.

Respondents **like**:

- Amount of green space retained
- Great lawn
- Increased number of views to the river
- Lagoon
- Delta garden
- Stormwater management features

Respondents have **comments/concerns** about:

Comments/Concerns	How it would be addressed OR Why it can't be addressed in the revised concept
Flooding and the viability of proposed infrastructure along the river	The proposed elements within the floodplain are designed with flooding in mind.
Furniture that occupy great lawn space might constrain other spontaneous uses (such as soccer)	Furniture will be moveable or temporary and is not intended to occupy the entire lawn area. It is understood that this area will be utilized for passive and active uses and both activities will be encouraged and accommodated.
Amount of hardscape at 8 th Street corridor	This space will be a major gathering space. The design reduces the amount of paving where possible, while still allowing for flexible movement patterns and gatherings.
Amount of hardscape at the foot of the Peace Bridge	There is a large amount of traffic that requires space to filter and mix as people leave the Peace Bridge. There is also a lot of people that want to gather around the Peace Bridge. This requires suitable space. The Delta Garden provides a series of spaces and paths for walking and gathering. It is felt the balance of hard and soft landscaping is balanced and supported by the majority of respondents.

Representative quotes:

“Love the great lawn area as a public space”

“Like that most of the green space will remain”

“Pictures how the great lawn as filled with deck chairs. Don't agree with this. Leave it open- currently young men come and play soccer. Early evening and weekends, see dads and kids out kicking a ball. We need space where people can get rid of energy”

“Ok except I do not agree with the designation "greenery encroaching on pathway" adjacent to 400 Eau Claire Ave. if it refers to the cottonwood trees on the south side of the existing pathway”

5.3 Amenities

Generally, respondents support the design strategies as they provide appropriate amount of spaces and amenities. Some disagreements remain on the presence for and/or location of kiosks and the look and amount of outdoor fitness equipment.

Some respondents feel that the design approach for amenities is not consistent with direction provided in Phase 1 in regard of proposed kiosks, as they might increase congestion on the pathway. Others think kiosks should be grouped as “clusters” draw more people.

Respondents **like**:

- Number of spaces for small and large groups
- Increase seating areas
- Boardwalk
- Overlooks

Respondents have **comments/concerns** about:

Comments/Concerns	How it would be addressed OR Why it can't be addressed in the revised concept
Need for a dedicated area for community gardens. Proposed location is adjacent to intersection of 8th Street and 3rd Avenue.	A potential location for a community garden has been included in the final plan.
Need for a public washroom	Washrooms are available at Eau Claire Plaza and on Prince's Island. The cost and maintenance issues related to public washrooms is the driver behind not included one within the park space. In the future, a public washroom may be included in the development of the parking lot at 8 th Street.
Need for bike racks	Bike racks will be located at strategic locations throughout the area.
Need for power to host festivals/events	Considerations for power for events will be addressed in subsequent design phases. It is intended that Prince's Island remains the main festival/event space in this area, but smaller events could take place on the Great Lawn. As such, power supply will be considered.
Engineering requirements for a maintain/create functional surfing waves	Provisions for a permanent standing wave are outside the scope of this project but will be explored in subsequent planning and design phases. Any construction within the Bow River requires numerous regulatory approvals, which will be explored.

Respondents **disagree** on:

The kiosks along the pathway interfere with traffic flow by creating congestion.	Kiosks immediately west of Eau Claire Plaza have been removed.
The kiosks would benefit of being “clustered”.	
Maintain the outdoor fitness equipment to a minimum	There has been a great demand for fitness equipment in this area. It will be kept to a minimum and located in one area.

Representative quotes:

“The pathways and ped/seating areas are a nice mix of active and relaxed use. Public art provided for!”

“Finally the south side of the Peace Bridge will look finished”

“Lots of interesting lookouts and spots for people to stop and enjoy the park. Work out area is great”

“Please incorporate space for a community garden for Eau Claire residents.[...]”

“You must seek input from real surfers on the surf wave to avoid the boondoggle/joke that was Harvey Passage. Seek out Alberta River Surfing Assoc, Neil Egsgard. Locals who have already spent \$\$\$ and thousands of hours on the engineering and permitting of proper waves. Without this the 8th st wave will never be more than a beginner's first time out. If you want to promote a sport that is already taking off in Europe and Montreal you need to put real effort in.”

5.4 Maintenance and Safety

Maintenance and safety design strategies addressed all concerns expressed in Phase 1.

Respondents **like**:

- Increased sightlines and lighting
- Amenities that bring more people in the park during evening and early morning
- Emergency call boxes
- Reduced blind spots
- Reduced ice-build up

Respondents have **comments/concerns** about:

Comments/Concerns	How it would be addressed OR Why it can't be addressed in the revised concept
Energy use by amount of lighting provided – opportunities to use green energy	Through subsequent design phases, the possibility of integrating solar-powered lighting will be explored.

Representative quotes:

“It is encouraging to see a greater focus on lighting. The best way to enhance safety is through opening up more spaces to more people, and this concept does that well.”

“More lighting will help to make the path feel safer. Improving sight lines and reducing ice-build up will be good.”

5.5 Other Comments

Many respondents raised concerns about flooding in this phase of engagement. Concerns relate to the viability of proposed infrastructure, reduced bank slopes, and opportunity to improve flood protection.

Comments/Concerns	How it would be addressed OR Why it can't be addressed in the revised concept
Flooding and the viability of proposed infrastructure along the river	Flood consideration in the proposed design needs to be better communicated to the public in the next phase.
Reduced bank slopes	Ultimate bank height will not be reduced. Elements proposed within areas that were flooded will be designed to withstand flooding.
Opportunities to raise bank to better protect from flooding	The City is undertaking designs for further enhancements to flood protection in this area which will be addressed in this plan and future design phases.

Representative quotes:

“Please, please forget about wading areas/urban beach...etc. Large areas were flooded! The river rose within 5 inches of the Peace Bridge's underside! I live 1 block away from Peace Bridge. We cannot make the banks less deep. It should be the opposite, higher banks for flood mitigation!”

“Please make you raise the bank of the river for flood mitigation. This area did flood in 2013 - in and around Peace Bridge, Eau Claire”

“Will it help protect downtown from future flooding? i.e. will it be built to a specific flood level?”