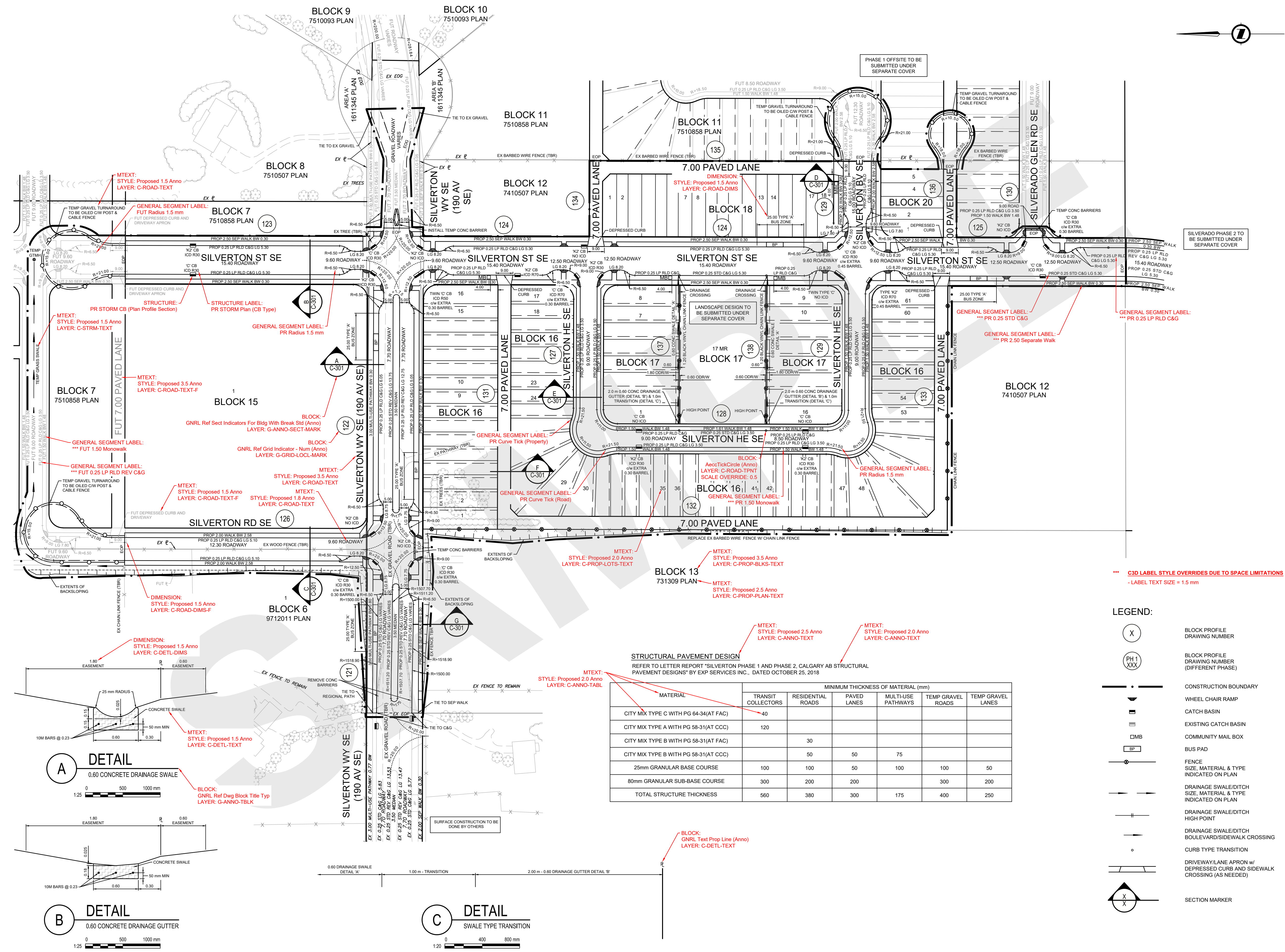


FILE: Z:\SPECIALTY\CONTRACT_SEED_DIRECTORIES\CONSTRUCTION DRAFTING STANDARDS AND TEMPLATES\DEV\SMPL-EXP-UPRODUCT\1245678C-103.DWG | DATE: Monday, November 21, 2022 1:53:30 PM



NOTES

- GENERAL NOTES (GN):
1. ALL PIPE SIZES ARE IN MILLIMETRES AND ALL DIMENSIONS ARE IN METRES UNLESS OTHERWISE NOTED.
2. ALL COORDINATES AND DISTANCES ARE BASED ON 3TM COORDINATE SYSTEM (NAD 83).

- ROAD AND SIDEWALK NOTES (RSN):
1. THE LOCATION OF ALL EXISTING INFRASTRUCTURE (HORIZONTAL AND VERTICAL) TO BE CONFIRMED IN THE FIELD BEFORE CONSTRUCTION BEGINS.
2. ALL EXISTING ROADS ARE OPERATIONAL AND MUST BE MAINTAINED AS SUCH DURING CONSTRUCTION OR SUITABLE ALTERNATE ACCESS CONDITIONS PROVIDED.

exp. Click Before YouDig. NAD 83 COORDINATES

ISSUED FOR PRELIMINARY APPROVAL

Table with columns: NO., DESCRIPTION, DATE, BY, APPD. Row 1: 0 ISSUED FOR PRELIMINARY APPROVAL 2018-11-14 RCM RG

STRUCTURAL PAVEMENT DESIGN REFER TO LETTER REPORT 'SILVERTON PHASE 1 AND PHASE 2, CALGARY AB STRUCTURAL PAVEMENT DESIGNS' BY EXP SERVICES INC., DATED OCTOBER 25, 2018

Table with columns: MATERIAL, TRANSIT COLLECTORS, RESIDENTIAL ROADS, PAVED LANES, MULTI-USE PATHWAYS, TEMP GRAVEL ROADS, TEMP GRAVEL LANES. Rows include City Mix Type C, A, B, 25mm Granular, 80mm Granular, and Total Structure Thickness.

LEGEND: BLOCK PROFILE DRAWING NUMBER, BLOCK PROFILE DRAWING NUMBER (DIFFERENT PHASE), CONSTRUCTION BOUNDARY, WHEEL CHAIR RAMP, CATCH BASIN, EXISTING CATCH BASIN, COMMUNITY MAIL BOX, BUS PAD, FENCE, SIZE, MATERIAL & TYPE INDICATED ON PLAN, DRAINAGE SWALE/DITCH SIZE, MATERIAL & TYPE INDICATED ON PLAN, DRAINAGE SWALE/DITCH HIGH POINT, DRAINAGE SWALE/DITCH BOULEVARD/SIDEWALK CROSSING, CURB TYPE TRANSITION, DRIVEWAY/LANE APRON w/ DEPRESSED CURB AND SIDEWALK CROSSING (AS NEEDED), SECTION MARKER

DETAIL A 0.60 CONCRETE DRAINAGE SWALE

DETAIL B 0.60 CONCRETE DRAINAGE GUTTER

DETAIL C SWALE TYPE TRANSITION