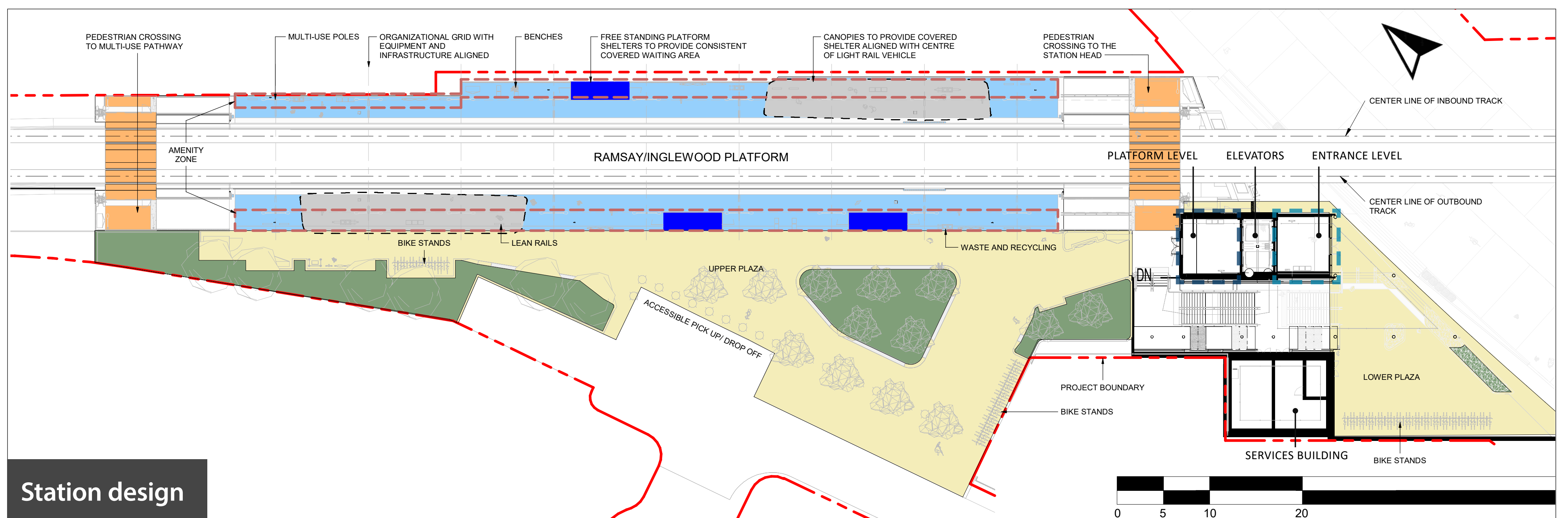




## Ramsay/Inglewood Station

### » Key Features

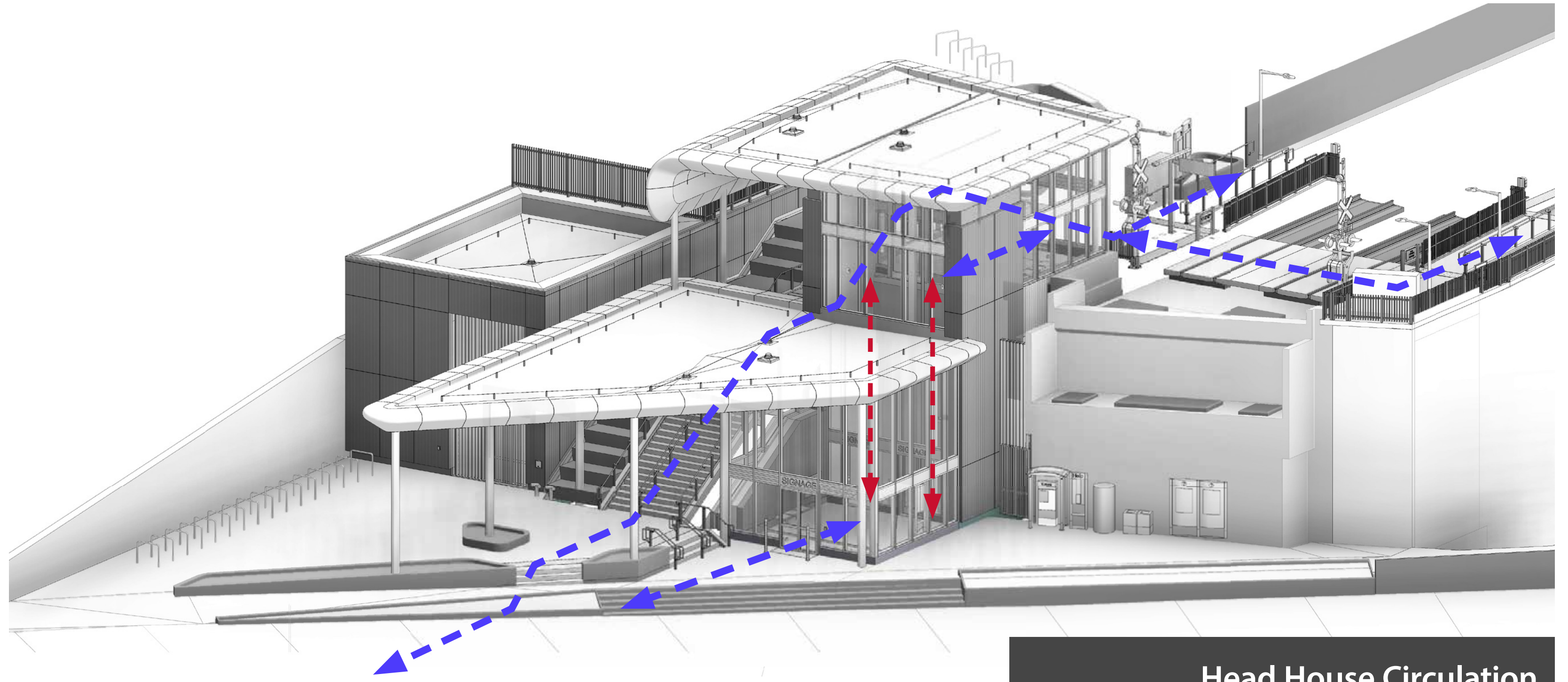
- The station connects two of Calgary's oldest neighbourhoods.
- Station design minimizes vehicle access in the community and promotes accessibility and safety with clear lines of sight.
- The location is adjacent to the CPKC tracks, minimizing impacts on the existing community.
- Design incorporates 11/12 Street S.E. public realm improvements, providing better access for riders arriving on foot, wheeling, or by other transit.



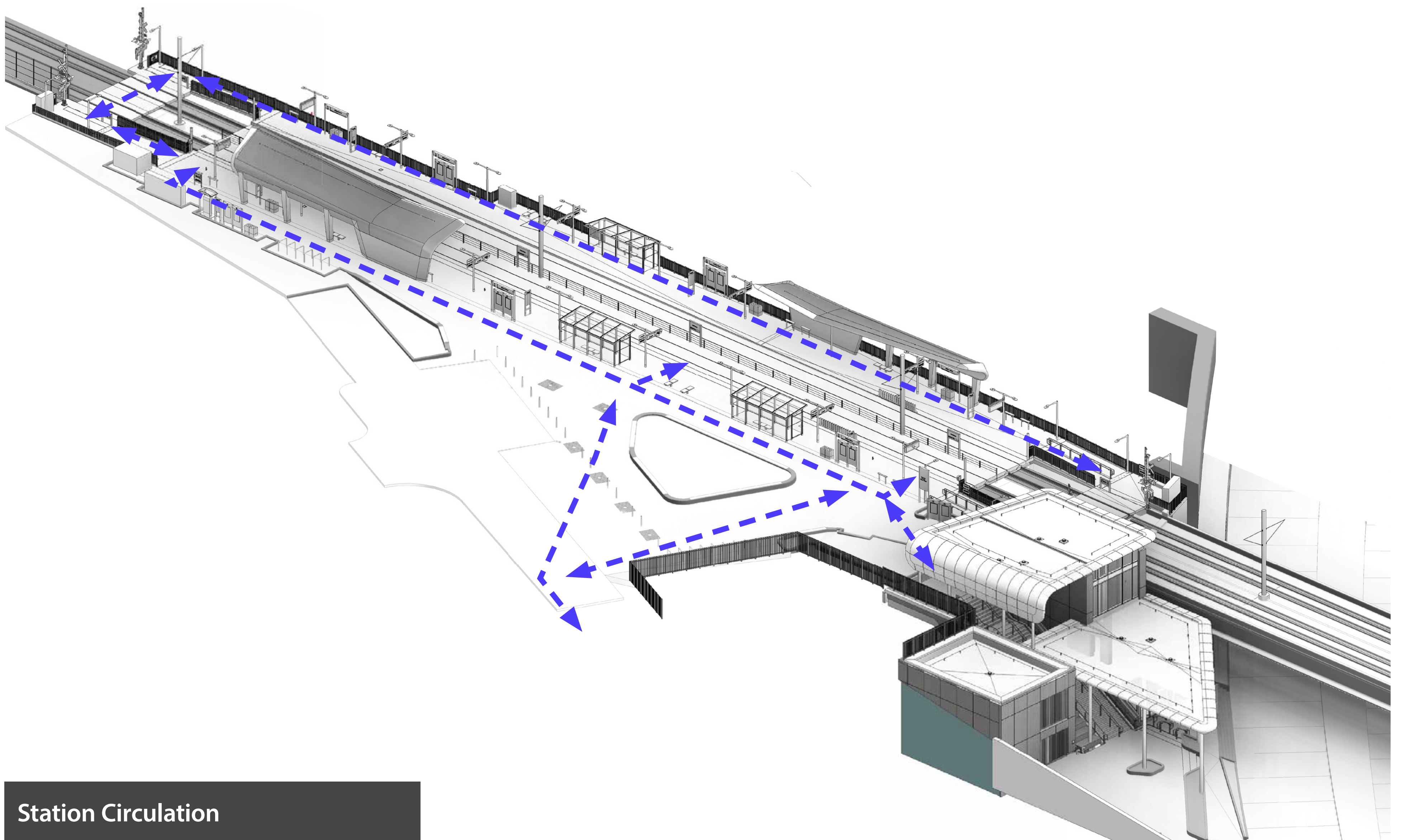
Station design



# Ramsay/Inglewood Station



Head House Circulation



Station Circulation

