

Project Background

Phase 1 of this project was completed in September 2023; it informed the project team of the values and concerns the community has for the future of the Hanson Ranch Wetland.

Since the constructed wetland was initially built, the storm pond has deteriorated through natural processes such as wind and wave erosion as well as sediment movement and settling within the pond and West Nose Creek that have resulted in it not functioning as designed. Because of this, the storm pond is not compliant with environmental regulations.



Image shows existing conditions.

In consultation with municipal, provincial, and federal regulators, The City is undertaking a redesign to improve the facility and meet regulatory requirements.

Progress has been made with regulatory requirements and permit applications and the design team has proposed upgrades to the site’s features and amenities for the community to enjoy.

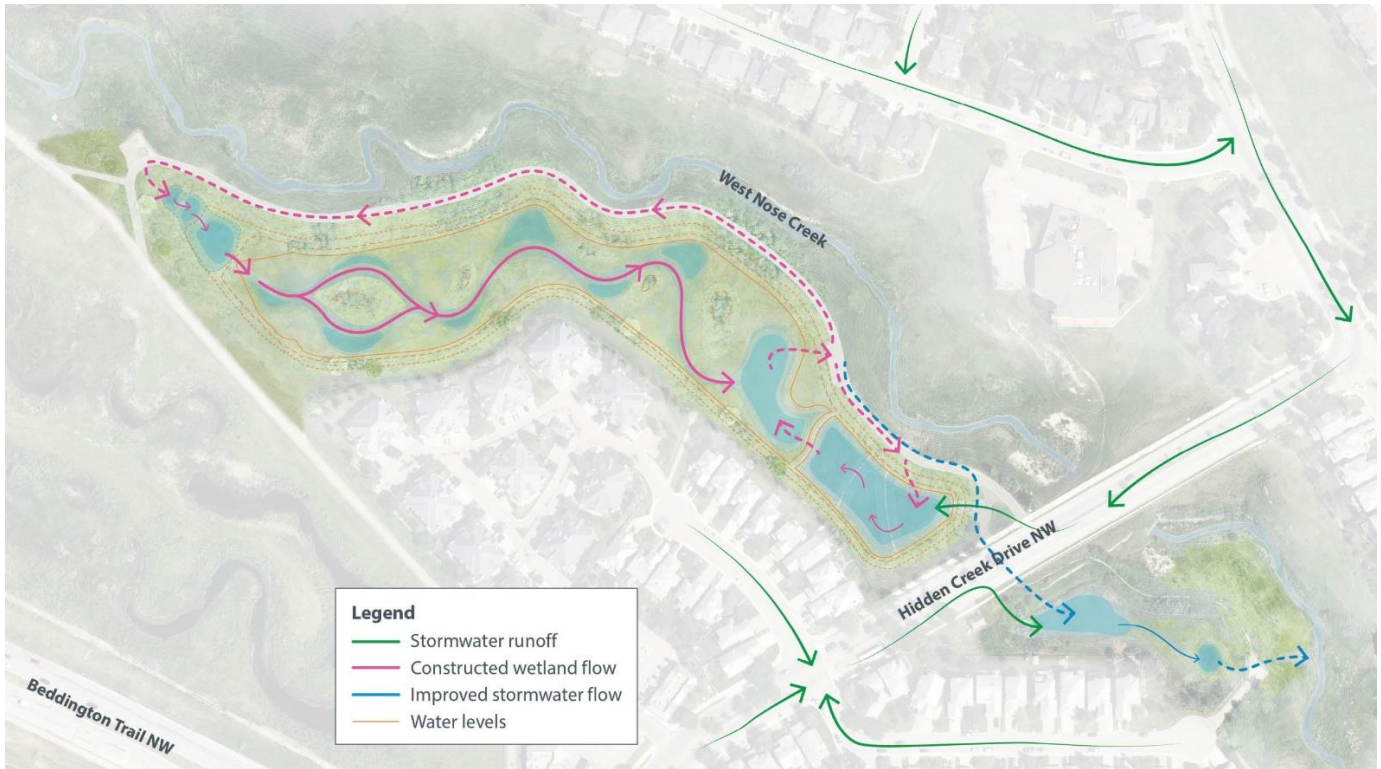


Image shows how water will flow through the improved constructed wetland.



Image shows a wetland perspective view of the improved constructed wetland.



Engage Resource Unit

Phase 2: Hanson Ranch Wetland Improvements / December 2024

Engagement Objectives

The primary objective has been to build trust and transparency with the community. It has been important to explain the technical and regulatory complexities of the project, as well as present design options of how the site can be improved aesthetically in the future.

From the feedback received from Phase 1 Engagement, we learned:

- Community desire to be involved in selecting features and materials for the site once regulatory requirements have been met.
- How important wildlife habitat protection and a natural, tranquil setting is to the community.
- Pathway conditions, connectivity, and accessibility improvement work were identified.

Phase 2 introduced design options for features and amenities, seeking community input to identify both desired elements and those to exclude from the site redesign. This phase also included the presentation of detailed story boards to outline the technical complexities that prevents the storm pond from being compliant with environmental regulations, and the essential need for repair work. The purpose of a storm pond is to retain stormwater runoff so it can be released more slowly to receiving water bodies. Currently, water from West Nose Creek and stormwater can mix without any control of runoff into West Nose Creek, resulting in greater runoff and erosion within the creek.

The improvements are needed to permanently separate this constructed wetland type of storm pond from West Nose Creek, enabling the constructed wetland to retain stormwater and improve water quality before its release to West Nose Creek. The improvements also add wildlife features such as islands, cobble piles, snags / coarse woody debris and include a greater diversity of native vegetation including wetland species, wildflowers, grasses, and shrubs.

Engagement Overview

Online: The online [Hanson Ranch](#) portal page gave an overview of the project and the background. It had answers to frequently asked questions and explained the outcomes and improvements being proposed. People with an interest in the Hanson Ranch wetland improvements had the opportunity to join the conversation and provide input on a variety of options, from seating and material styles to potential amenities like water features, lookout points, and signage. The participation activity was open for approximately four weeks.

Out of 683 page visits, 97 contributions were made.

In-Person: Two in-person engagement events were held in the community, at the Holy Trinity Anglican Church:

- Wednesday October 23, 2024 from 4:00 PM – 7:00 PM
- Sunday October 27, 2024 from 2:00 – 4:00 PM

The City's *Climate and Environment Team* partnered on the in-person engagement. Their team builds public awareness about stormwater management and the important function of storm ponds. Participants in the event could learn how residents can help with stormwater management and biodiversity on their own property. There were resources available, including how to make YardSmart choices like native plants that attract pollinators, best gardening practices, and harvesting water with a rain barrel.



Climate and Environment Team at in-person session

October 2024 in-person engagement

In Phase 2, the Project Team encouraged people to share their artwork and photography of the area's wildlife. There were 10 submissions, uploaded through the engagement online portal. These have been made into a collage which will be published online alongside this report.



Engage Resource Unit

Phase 2: Hanson Ranch Wetland Improvements / December 2024

Communications Overview

A variety of tactics were used to communicate Phase 2 Engagement opportunities to reach as many people as possible who may have an interest in Hanson Ranch wetland improvements:

Postcards:

1,000 postcards were mailed to the households that are in the area surrounding the storm pond.

As shown in the example on the right, the postcard included the dates for engaging on this Phase of the project and all the information needed to attend the in-person events to meet the project team.

It also included online information where people could give their input through the engagement portal.

The postcard included a QR code that took them directly to the online engagement portal page.



Calgary

Hanson Ranch design features open for feedback Oct. 21 to Nov. 4

Following our previous engagement last September, we've made progress on the design of the Hanson Ranch Wetland Improvements Project. **Join the conversation and provide feedback** regarding some aspects of the design features for the project and meet with City team members to learn more.

From October 21 to November 4 visit engage.calgary.ca/hanson-ranch to explore the design features and share your preferences.

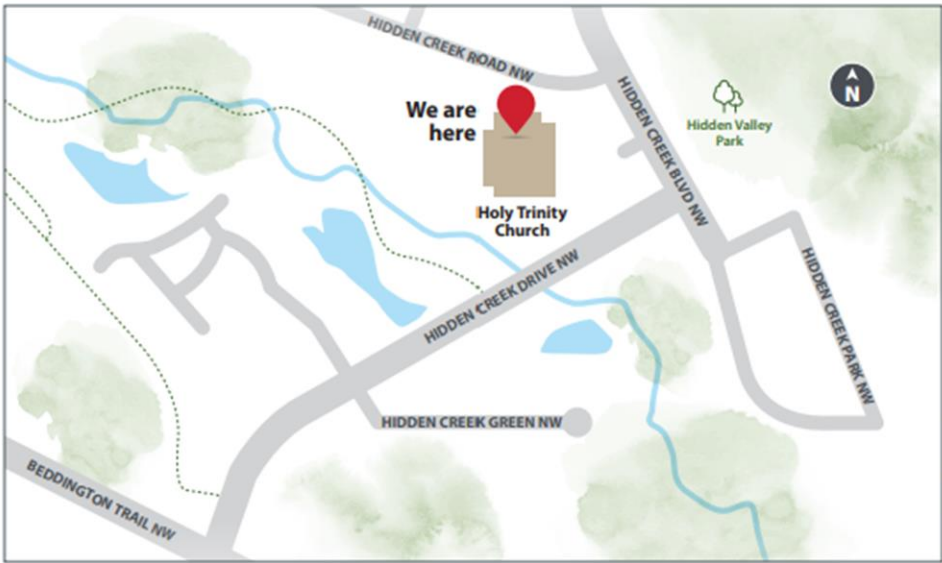
The Hanson Ranch Wetland Improvements team will be at:

Holy Trinity Anglican Church
18 Hidden Creek Road N.W.

- October 23 – 4 to 7 p.m.
- October 27 – 2 to 4 p.m.



Holy Trinity Anglican Church is not affiliated with the event.



We are here

Holy Trinity Church

Hidden Valley Park

For more information, visit calgary.ca/HansonRanchWetland or email HansonRanchWetland@calgary.ca.

22-0024205 - CRV-31864

Roadside signs: Two high-visibility signs were placed at strategic locations to inform passersby that there would be public engagement on improvements to the Hanson Ranch wetlands. Signs advertised the dates for the engagement period and the website where people could find information and provide their input. Locations were:

- East side of Hidden Creek Blvd, south of Hidden Creek Road NW
- East side of Hidden Creek Drive, adjacent to the project area

Newsletter ads: Advertisements were published in the community newsletter telling readers about the engagement period and the online and in-person events.

Email: As with all public engagement projects, the Hanson Ranch project team provided regular updates to the local Ward Office and Community Association.



What We Heard:

In total, 76 participants provided their thoughts on the questions above. People hoped the improvements wouldn't change the natural, wild appearance of the area; they hope they will still be able to watch wildlife and use the space for gentle exercise and quiet gatherings. Many shared their hopes that amenities such as paths and seating would be accessible and comfortable for people of all ages and abilities. It was clear that participants value the area and have a strong emotional attachment to it and its role in their community.

Below, we have summarized the main themes that were most prevalent in the comments received for each question asked. The comments displayed are verbatim responses provided by participants. For the sample comments shown below, in some cases, only the applicable excerpt of a comment that spoke to a particular theme was utilized. A comprehensive list of all verbatim comments in their entirety is included in the "Verbatim comments" document.

1. Please give us your thoughts on the proposed elements shown above. If not shown, what would you like to see here? In total, 58 people answered this question.



The eastern social space will be the pedestrian gateway into the site. Proposed features may include a pier lookout, benches, and bike racks. This location will function as a meeting point as well as a maintenance access point for sediment cleanout infrastructure.

Theme	Sample Comment
Wild aesthetic	<p>“Nobody I know wants any of this, all they want is as natural a setting as possible, nothing fancy that requires more maintenance costs or attracts more people.”</p> <p>“This is overkill and makes it look unnatural. This is not the look for a natural space that I want to have and seems overbuilt. I don't want fences all over the wetlands; this isn't what I want to see in the area. I would be very upset if this is what the wetland looks like when you are done.”</p> <p>“I am not seeing shrubs, cattails and other trees that the birds love today. The path and pier lookout look great.”</p> <p>“I believe too many added elements and developments like metal bike racks, railings and benches will take away from the natural look that we all love</p>



	<p>about the path. My biggest priority is maintaining nature. Maybe just add some trees for shade. Simplicity is better!"</p>
<p>Functioning wetlands</p>	<p>"Wetlands like this in Calgary are very rare. One of the main benefits of the wetlands is that it's a very natural and wild space with a wide diversity of animal and bird species. Adding social elements will detract from the wild character of the space."</p> <p>"I like this, but I'm concerned about the ponds infilling with sediment and organic matter and that over time there won't be open water but only boggy, muddy areas. I'm also concerned about noxious weeds - which is a problem now and there is a weed "seed bank" in the soil. How will this be mitigated?"</p> <p>"Trees are cut down in the picture from what is currently there. You need to keep trees as birds use them as well as other creatures."</p> <p>"Fix the pond as is necessary. Repair the path and omit the rest. Leave it as natural as possible. This is my backyard I don't want people congregating there. Also it is unnecessary to make it fancy. It is a natural area."</p>
<p>Simple amenities</p>	<p>"I like that the pathway in this area is smooth and wide, so it will be accessible for all ages and mobilities. The concrete benches should be durable and less vulnerable to weather damage and metal fences are also more durable and have less surface area for graffiti."</p> <p>"Love this! I appreciate the increased sitting areas. This a lovely area to get out into nature and decompress. Sitting is valuable. Some benches with backs for elderly to rest on walks would be good too."</p> <p>"A pier lookout/meeting point is a very nice design feature but my preference would be for it to retain a natural look (stone vs. metal or wood). Educational placards outlining the geological history of the area, how it may have functioned 200 years ago and how it functions/its purpose today."</p>

2. Please give us your thoughts on the proposed elements shown above. If not shown, what would you like to see here? In total, 50 people answered this question.



The western social space will act as a gathering place on the site. Proposed features may include an informal group gathering space/outdoor classroom, benches, and a terraced seating lookout into the wetland. This location will function as a gathering space as well as a maintenance truck turnaround.

Theme	Sample Comment
Natural look	<p>“This looks more natural and makes sense for the space. I like how there are no fences and the pathways flow into the meeting areas. This is a nice design that I would enjoy seeing in the wetlands.”</p> <p>“The use of natural materials appeals to me, and I appreciate the flowers. The rocks are adequate but hopefully some benches would have backs as well.”</p> <p>“A few benches would be fine. Not terraced seating. Keep it natural and quiet. As for maintenance truck turn around -find another</p>



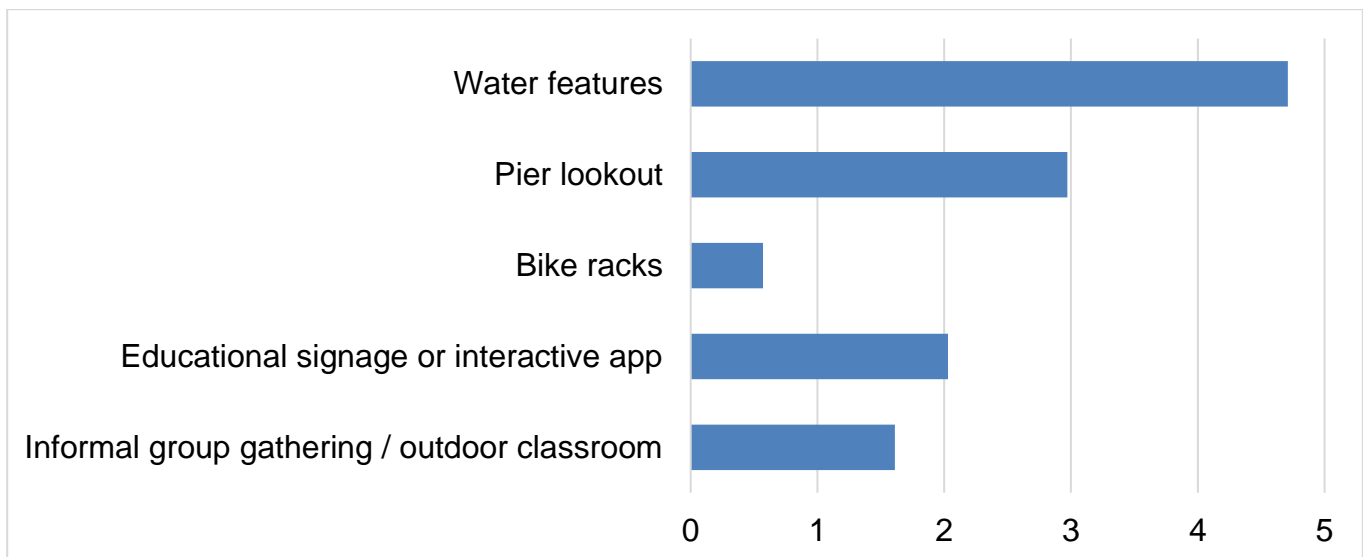
	<p>way to get maintenance there other than big trucks. They have ruined the current path. Walking is a good alternative. Trucks don't need to be there."</p>
<p>Gathering spaces</p>	<p>"Like the rock style seating. More causal for school field trips and studying the wetlands. Keep the trees."</p> <p>"I like the idea of outdoor learning space, great for the local schools, churches and community groups."</p> <p>"I like that the western space's design is more natural and that the gathering spaces are off to the sides of the pathways. In the past, local schools have used both areas for field trips."</p>
<p>Wildlife</p>	<p>"I am worried that the outdoor classrooms and terrace benches will cut into the wildlife space. A couple benches is all that is needed and maybe some beneficial wild flowers for added scenery."</p> <p>"Looks good for preserving wildlife/wetland. I think lookouts/benches are good to encourage people to stop and enjoy, but should not block bicycle traffic as we want to encourage bicycle use as an alternative transportation. I would like to have more garbage bins to encourage keeping the area clean."</p> <p>"None of the above, leave it for the birds and beasts and trees...terraced seating...all that will do is attract the kind of social activities that only occur after dark."</p>

“The number and type of social elements added must be balanced with the need to maintain a sustainable habitat for the many diverse species that make the wetlands their home. Too many social elements will drive these species away degrading the unique character of the wetlands.”

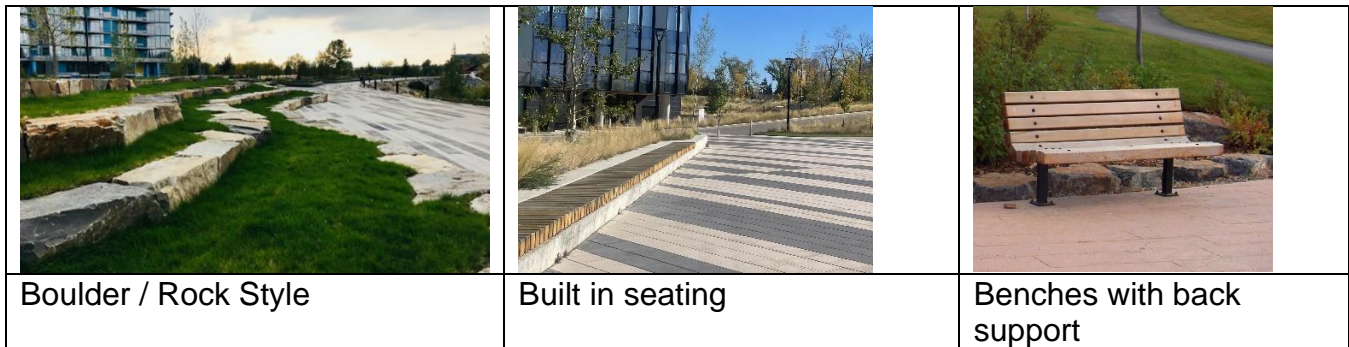
3. What type of amenities would you like to see at the Hanson Ranch wetland? Please rank the following options to help us understand community preference and needs.

				
Water Feature	Pier Lookout	Bike Racks	Educational Signage	Gathering Place

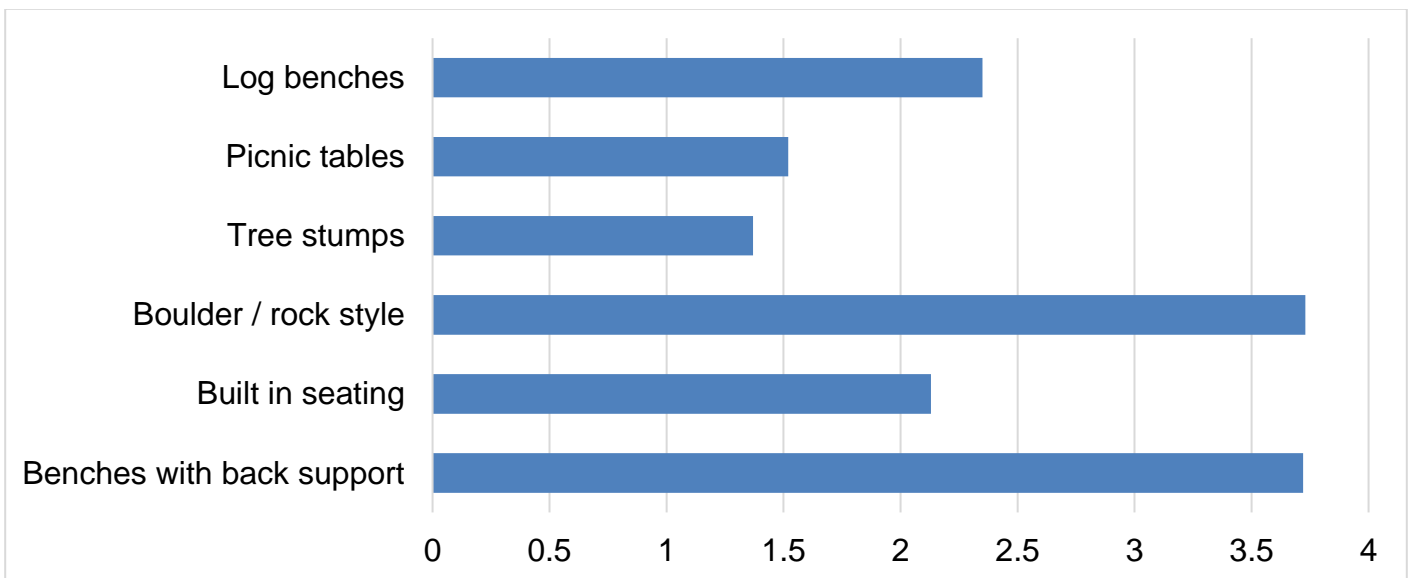
This chart shows how participants ranked the preferences using weighted scores that are based on the average rank given to each preference. The longer the bar, the higher the priority on average of all the participants. In total, 68 people answered this question.



4. What type of seating would you like to see used at the Hanson Ranch wetland?



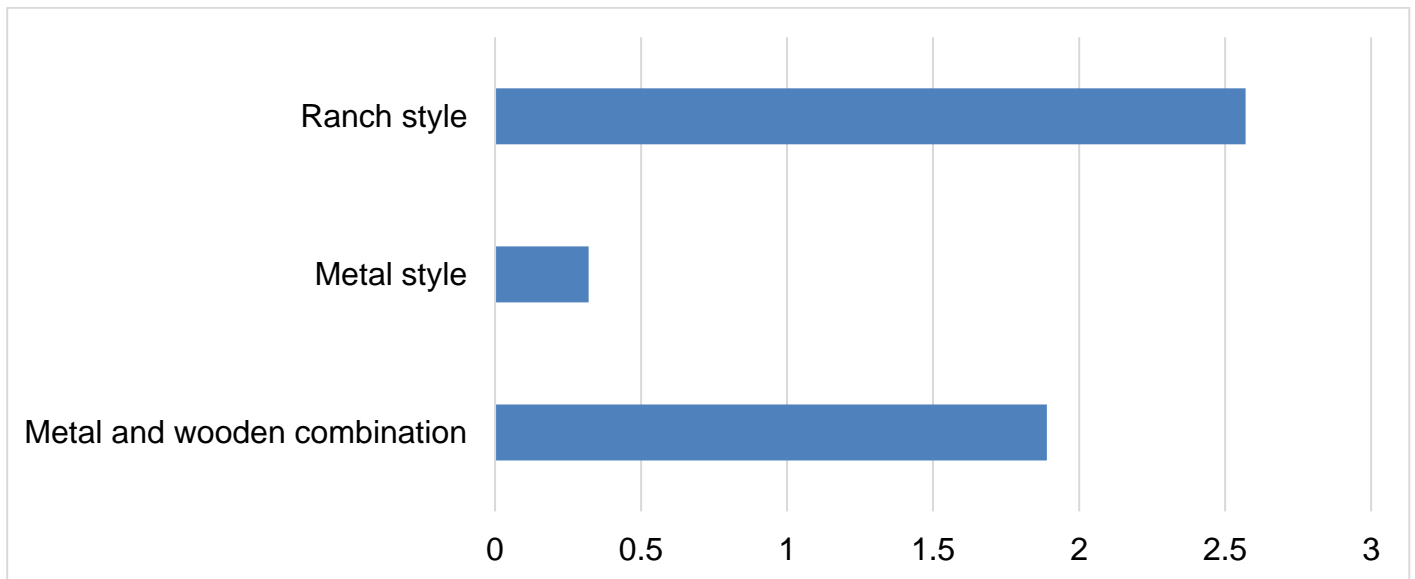
This chart shows how participants ranked the preferences using weighted scores that are based on the average rank given to each preference. The longer the bar, the higher the priority on average of all the participants. In total, 68 people answered this question.



5. What type of fencing and/or railing materials would you like to see at Hanson Ranch Wetland?



This chart shows how participants ranked the preferences using weighted scores that are based on the average rank given to each preference. The longer the bar, the higher the priority on average of all the participants. In total, 71 people answered this question.





Engage Resource Unit

Phase 2: Hanson Ranch Wetland Improvements / December 2024

6. How do you think you will be impacted by this project either during or after construction? In total, 60 people answered this question.

Theme	Sample Comment
<p>Loss of enjoyment and health benefits of routine visits to the area during construction</p>	<p>“Impact enjoying the wetlands by bike and walking the dog while construction is on.”</p> <p>“We walk here frequently (2-3 times a week), it is a real solace to see all wildlife and listen to the water. We will miss this spot while the work is done.”</p> <p>“I use the pathway often for running and dog walking. Any disruption will affect my fitness routine. Hopefully afterward the pathway retains the ability to use it as a running path and links up to the existing pathway network.”</p>
<p>Noise, dust, traffic, during construction</p>	<p>“There will be considerable impact due to where I live Noise trucks etc. If it is left natural I.e.no without changes it will be fine. With proposed changes it will potentially be an invasion of my privacy. When we moved here we were told it was a natural area. Proposed changes make it unnatural.”</p> <p>“My home backs on to the wetland. Construction will be disruptive-noise, dust, loss of use of the wetlands. My hope is this short-term issue will have long term benefits-my expectation is the redevelopment will retain the wild nature of the space and it will continue to add value to the neighborhood.”</p> <p>“I am worried about the noise from construction not only disrupting the wildlife but also our own homes. I am also worried about losing a daily walking path during construction. After the construction I’m worried about other communities coming and overcrowding the path.”</p>



Watching wildlife

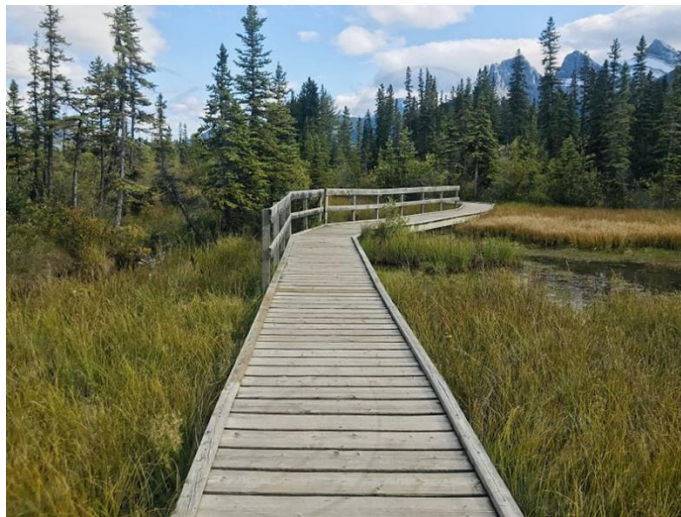
“If the park is over developed it will ruin what I appreciate about this little natural oasis in the city. Where my family and I can enjoy watching birds, spotting the muskrats swimming in the water and enjoy a refreshing walk away from it all. Long construction will impede all of this.”

“Disruption to wildlife. 5 years ago we had many more birds, plovers, avocets, herons, sandpipers, but the water levels were raised and we lost the sand banks, and with that we lost the birds. We have virtually no bats or owls now. Accommodation should be made for these species.”

“It's imperative that wildlife is taken into account. I don't want to see the beavers relocated or harmed. I also want to see the coyotes protected. One of the best things about this area is the wildlife. I'd also like to see more trees planted with flashing to protect from beavers eating them.”

7. Have you seen any inspiring ideas from other similar spaces that you think would be good for The City to consider for this project? Please upload an image below.

This question received two submissions:



SHARE YOUR OWN PHOTOGRAPHY OR ARTWORK!

We invited people to share their photography and/or artwork of the various wildlife they enjoy seeing at the wetland. We received spectacular submissions, included below:



Wildlife photography from residents in the Hanson Ranch Wetland area.





Engage Resource Unit

Phase 2: Hanson Ranch Wetland Improvements / December 2024

Evaluation

The wetland is a precious community space and is valued for its wild natural setting. There is deep concern that the area will be over-developed to become a recreational attraction space, instead of a tranquil sanctuary for wild animals and nature, which is strongly preferred.

Participants would like effort invested into making the area more appealing and safer for wildlife than for any increased human activity. Elements such as vegetation, shrubs, flowers, and trees that attract wildlife have been mentioned frequently. As well as exploring options that invite more species that the community feel has declined such as bats, birds, and owls. This is of key importance for the project team to note moving forward.

The area was described by words like “oasis”, “sanctuary”, “solace”, “rare”, “unique” – and the prevailing sentiment is to maintain this character of the space and if anything, improve on this as the area’s function.

Additional garbage cans were suggested multiple times.

Engagement seems to have been successful in explaining and outlining the need for the technical construction work required for the storm pond to function as intended, with a greater understanding of constructed storm ponds and their functionality from Phase 1 engagement last year.

Next Steps

The project team, including design consultants, engineers, landscape architects and internal City representatives from Operations, Parks and Open Spaces will review public feedback and take it into consideration during the design process and for the next phase of engagement. This feedback, alongside factors such as cost, environmental impact, technical limitations, and long-range plans to inform design options will be presented in Phase 3: Reveal.

Phase 3 Engagement will present final public realm improvements to the public for their information prior to construction, which will begin in late summer 2025 at the earliest.



Engage Resource Unit

Phase 2: Hanson Ranch Wetland Improvements / December 2024

Verbatim Comments

Verbatim comments presented here include all feedback, suggestions, comments and messages that were collected online and in-person through the engagement described in this report. All input has been reviewed and provided to Project Teams to be considered in decision making for the project.

Any personal identifying information has been removed from the verbatim comments presented here. Comments or portions of comments that contain profanity, or that are not in compliance with the [City's Respectful Workplace Policy](#) or [Online Tool Moderation Practice](#), have also been removed from participant submissions.

Wherever possible the remainder of the submissions remains. No other edits to the feedback have been made, and the verbatim comments are as received. As a result, some of the content in this verbatim record may still be considered offensive or distasteful to some readers.

Please give us your thoughts on the proposed elements shown above. If not shown, what would you like to see here? [east view]

Love the pier idea, looks good.
What is desired is a maintained path, with garbage cans and minimal seating, keeping the area as natural as possible. No pier lookout, or bike racks (which seems particularly pointless. A more developed 'social space' will only make it more attractive for people in the middle of the night.
Wetlands like this in Calgary are very rare. One of the main benefits of the wetlands is that it's a very natural and wild space with a wide diversity of animal and bird species. Adding social elements will detract from the wild character of the space.
Trees are cut down in the picture from what is currently there. You need to keep trees as birds use them as well as other creatures.
Currently I enjoy walking through the wetlands to enjoy nature. I would prefer no railing, sitting benches or unused ugly bike racks destroying the environment of the "wetlands." Keep the wetlands natural, please.
This is overkill and makes it look unnatural. This is not the look for a natural space that I want to have and seems overbuilt. I don't want fences all over the wetlands; this isn't what I want to see in the area. I would be very upset if this is what the wetland looks like when you are done.
Keep it as natural as possible. Limit impact on wildlife.



Engage Resource Unit

Phase 2: Hanson Ranch Wetland Improvements / December 2024

Looks great! Like how it's accessible for wheelchairs, walkers, strollers, bikes, etc
I like this, but I'm concerned about the ponds infilling with sediment and organic matter and that over time there won't be open water but only boggy, muddy areas. I'm also concerned about noxious weeds - which is a problem now and there is a weed "seed bank" in the soil. How will this be mitigated?
Please maintain the pathways as is. Do your work on containing the storm ponds. The City doesn't need to spend the money upgrading the paths. Don't need look outs etc.
By the road: bench, signage about the importance of wetlands. Garbage can.
Love the wider walkway and benches.
More trees. Stay with the original landscape. Don't encroach into the hill. No fences or bike racks.
I like this idea but hope they keep the trees that exist. This place cute looks like they are removed.
A small pier with a bench would be nice. We really love the bullrushes - could we retain some? Also, hope everything can be done to persuade the beavers not to be a nuisance. We love the beavers. And finally, garbage cans at either end for people to put their dog poop would be great.
"This doesn't look very inviting. The rigid railings and overall sharp design looks is very opposing to the natural setting.
We should keep the same elements: look out pier, benches but not give them such a hard and rigid feeling"
More large trees would be nice. There used to be a lot of large trees here 20 plus years ago but the beavers cut them all down.
Very good idea and can we also install a fountain to attract more people for a walk. Cut bushes so people can easily walk..die to the bushes, there are lots of mosquitoes.
I dont like the chain link fencing. I would prefer more natural materials are used in this area to maintain the look of the community.
I [sic]
I don't think bike racks are needed for this space. A low to no maintenance hardscape would be preferable so weeds, glass, etc doesn't grow unmanaged.
A pier lookout is unnecessary. Benches also unnecessary, they will attract people leaving litter and vandalism.



Engage Resource Unit

Phase 2: Hanson Ranch Wetland Improvements / December 2024

The fencing depicted in the picture does not blend in with the ranch-style motif in Hanson Ranch. Any elements added should be congruent and harmonious with the existing ranch-style. I also don't think the proposed bikeracks will be used as there is no real need to gather at the pedestrian gateway.

I am not seeing shrubs, cattails and other trees that the birds love today. The path and pier lookout look great.

I think it should be more pedestrian oriented than designed for cyclists. 90% of the cyclists passing us on the paths are speeding and expect pedestrians to jump out of their way when they ring their bell. The pier lookout and benches are great. No wood should be used as it will only get damaged.

The social space should be placed not right at the entrance but possibly a little further in so the noise from the traffic is not as profound. With a lot of traffic noise, a gathering space will be less desirable.

A pier lookout/meeting point is a very nice design feature but my preference would be for it to retain a natural look (stone vs. metal or wood). Educational placards outlining the geological history of the area, how it may have functioned 200 years ago and how it functions/its purpose today.

A play structure protected by fencing to protect from the stormwater edge to encourage a community space for kids.

Please ensure, that the park is regularly patrolled by city bylaw for off leash dog infractions. Major problem. Consider putting up a rain/hail shelter as we experience major storms here. Garbage bins please for trash and dog poop. Make dog bags available. Connect the area to the pathway.

This will attract vandalism and additional noise at night. Will it be maintained? This is a relatively small area to warrant this type of structure.

Looks too constructed, would prefer something that looks more natural, but the idea of a pedestrian gateway is good.

This is fine.

Fix the pond as is necessary. Repair the path and omit the rest. Leave it as natural as possible. This is my backyard I don't want people congregating there. Also it is unnecessary to make it fancy. It is a natural area.

Looks good.



Engage Resource Unit

Phase 2: Hanson Ranch Wetland Improvements / December 2024

I like the idea of added benches and a pier lookout.
Looks great. I like the wider viewing point to make the path larger and more useful in that area. Won't be clogged by people stopping.
I like that the pathway in this area is smooth and wide, so it will be accessible for all ages and mobilities. The concrete benches should be durable and less vulnerable to weather damage and metal fences are also more durable and have less surface area for graffiti.
I like that it doesn't appear to change the current look too much and has a large pathway for residents.
Very nice and just finally bringing us up to the bare minimum accommodations that all REAL communities already have. Very in favour.
Looks nice. Although I like ranch style fencing the metal choices are safer.
more natural features - rock benches.
This looks great. I like the more open space, and smoother pathways.
More seating and bike racks are a great idea.
Keep pathway separate from gathering area to allow bikers safe way through.
Looks good to me.
I hope that there will still be some "bridged" areas with wooden bridges or boardwalks because those features stand out and look lovely. I'm thinking like the ones in Canmore at Policeman's Creek. I would like to see some trees in this space though, with a wider variety of greenery.
From this viewpoint it looks good to me, perhaps the materials could be more natural, the metal and cable look is not common in Hanson Ranch.
I like the concepts. I only hope that upkeep and maintenance of the area is significantly improved over what has been done up to this point.
I like this proposal.
Basic pathway, sturdy railings and well-spaced benches. Don't spend money on a lookout or bike racks.
Love this! I appreciate the increased sitting areas. This a lovely area to get out into nature and decompress. Sitting is valuable. Some benches with backs for elderly to rest on walks would be good too.



Engage Resource Unit

Phase 2: Hanson Ranch Wetland Improvements / December 2024

nobody I know wants any of this, all they want is as natural a setting as possible, nothing fancy that requires more maintenance costs or attracts more people.

A pier lookout is a great idea! I also like the idea of benches. There will not be that many amenities to warrant bike racks, I think. Most of the people who use this park area are walking. The main bike path is further up and currently the 2 paths dont connect - making racks not needed.

Looks very nice! Would be ideal for any bridges to allow space for nesting barn swallows underneath as replacement of the current bridges would impact their breeding habitat.

There are no trees in the picture. Don't need bike racks, just an improved pathway. Why is the flow of water being broken up. Will this impact the wildlife that currently exists in the pond. If it is a natural wetland area why is there fencing. Don't feel this is natural and will require maintenance.

I believe too many added elements and developments like metal bike racks, railings and benches will take away from the natural look that we all love about the path. My biggest priority is maintaining nature. Maybe just add some trees for shade. Simplicity is better!

"We could do without the fences, a railing might be beneficial, but not fencing.

If the ponds will be disconnected from the creek(no fresh water intake/flow) then likely should include a fountain feature or two to maintain some freshness."

I prefer a more ranch-style architecture (fencing, pathway, bench style). Is this railing necessary? Isn't it a barrier for some wildlife (coyotes, deer)? Maybe separate the lookout features from the pathway, to avoid congestion and conflict with bike path users. More garbage bins?



Engage Resource Unit

Phase 2: Hanson Ranch Wetland Improvements / December 2024

Please give us your thoughts on the proposed elements shown above. If not shown, what would you like to see here? [west view]

I assume this is near stony trail, it's quite loud there, not ideal for a gathering spot.

See above. No gathering space or terraced seating as it will end up creating problems from people using it in the night. More nature, less developed features!

The number and type of social elements added must be balanced with the need to maintain a sustainable habitat for the many diverse species that make the wetlands their home. Too many social elements will drive these species away degrading the unique character of the wetlands.

"Like the rock style seating. More casual for school field trips and studying the wetlands.

Keep the trees"

A pathway and bridge over Nose Creek to allow access from Hidden Creek Rd. (i.e. from the north side). Most users live in Hanson Ranch. A bridge over the Creek would greatly improve access for residents of Hanson Ranch.

Again, please lets us enjoy are natural oasis in the city. The less development beyond a simple walking path the better.

This looks more natural and makes sense for the space. I like how there are no fences and the pathways flow into the meeting areas. This is a nice design that I would enjoy seeing in the wetlands.

Love the natural feel of this space!

I like this concept. The pathways depicted do not look accessable. Gravel? I would also like to see educational signs. I see this under ammenities, but why limited to "top 3?" as they should all be included! The south cell is ignored in these plans and needs attention.

I am a retired principal and one of my schools projects was to team up with a variety of conservation groups to utilize this type of environment for educational purposes. [Personal identifying information removed].

Would like to see the paths improved but area kept ranch looking. Walkway improved from community pathway to regional pathway.



Engage Resource Unit

Phase 2: Hanson Ranch Wetland Improvements / December 2024

<p>At end of path: bench, tables, educational signage on birds and plants, and about the importance of "green" space for good mental health. "We breathe with nature".</p>
<p>Sad that trees will have to be removed but rendering looks welcoming. Any thoughts given for shade? People sitting in full sun will be a challenge. Consider a pergola or other structure for shade...?</p>
<p>Don't need all of that stuff. It's beautiful the way it is now.</p>
<p>This could attract people to hang out including teens. I don't see needing that much seating. The pathways are for walking. Also lots of wild life may be scared away with so many people.</p>
<p>A gazebo for when it's hot would be nice. Public art as well. Maybe something that talks about the history of the spot? I've heard there was a Metis encampment near here, as well as a buffalo jump up the cliff a short ways down Nose Creek.</p>
<p>"This looks great! I think a small make-shift fire pit would be great addition.</p>
<p>Also a spot where one could just sit and see the water and vegetation without having to look at the highway would be good."</p>
<p>Bike and walk and walking paths that may need to be separated if wide enough as bikers in this area can be biking very fast.</p>
<p>I like the natural materials (large boulders etc) used in the picture to maintain the look of the community with bushes and shrubs to attract wildlife etc.</p>
<p>Having rocks as seating is a good idea.</p>
<p>If this is going to be a gathering place then trash cans will be required in this area. The informal seating elements depicted align closer to the prairie theme of the area.</p>
<p>Love the stone sitting areas and native plants.</p>
<p>Natural in all aspects so it retains its wetlands designation and does not become a public park. Open spaces with natural plant species, stone vs wood benches. Regular maintenance so it does not devolve into a weedy, overgrown eyesore.</p>
<p>Love the natural seating. Consider rain and hail shelters. Post clearly the area is not off leash.</p>



Engage Resource Unit

Phase 2: Hanson Ranch Wetland Improvements / December 2024

<p>This is a nicer option than the above.</p>
<p>Like the more natural look as opposed to benches. I like this a lot.</p>
<p>Make it non-loitering, however you collect data! Make that the style.</p>
<p>As above. Not necessary. Make it a pleasant path to walk on and do what you just for the pond. Otherwise no changes. Adding more seating fencing etc will chase the wildlife away.</p>
<p>Looks good.</p>
<p>I like the idea of outdoor learning space, great for the local schools, churches and community groups.</p>
<p>Also looks good, like the natural elements.</p>
<p>I like that the western space's design is more natural and that the gathering spaces are off to the sides of the pathways. In the past, local schools have used both areas for field trips.</p>
<p>Yes</p>
<p>It looks very nice and I'm in favour as long as it doesn't take away (only enhance and promote) from the nature (wildlife) preserve that is Nose Creek.</p>
<p>Nice to have someplace to get together with neighbors.</p>
<p>Way more covered garbage bins are needed along the trails. There is dog poo bags and Circle K garbage everywhere. Definitely more bins needed at the bus stops nearby too.</p>
<p>Since there are no schools in the area, classroom type spaces/amenities may be a waste, not used and look out of place.</p>
<p>Looks good to me.</p>
<p>I like the social space and many options for group seating. Again, I would like to see more trees. A water feature here would be lovely. I would prefer if the main patch was paved with smaller pebbled trails secondary. I think a refuse bin will be required for this spot.</p>
<p>The use of natural materials appeals to me, and I appreciate the flowers. The rocks are adequate but hopefully some benches would have backs as well.</p>



Engage Resource Unit

Phase 2: Hanson Ranch Wetland Improvements / December 2024

I like this proposal.
No group gathering space, occasional bench.
Very nice. I remember when I was a kid attending elementary at St. Elizabeth Seton in Hidden Valley we would come out and walk in this wetland area as part of science class. I love that the area will be improved for classes. Plentiful seating makes it possible for people to read/rest outside.
none of the above, leave it for the birds and beasts and trees...terraced seating...all that will do is attract the kind of social activities that only occur after dark.
A group classroom is intriguing, though this will increase the vehicle traffic and noise in the area. I like the idea of a terraced seating area to view the wetland.
It looks very nice, new trees and bushes along the pathway will need to be planted (as pictured) due to beaver activity this past year. Many of the trees and bushes that lined the path in previous years were chopped down by the beavers this year.
A few benches would be fine. Not terraced seating. Keep it natural and quiet. As for maintenance truck turn around -find another way to get maintenance there other than big trucks. They have ruined the current path. Walking is a good alternative. Trucks don't need to be there.
I am worried that the outdoor classrooms and terrace benches will cut into the wildlife space. A couple benches is all that is needed and maybe some beneficial wild flowers for added scenery.
... [sic]
Looks good for preserving wildlife/wetland. I think lookouts/benches are good to encourage people to stop and enjoy, but should not block bicycle traffic as we want to encourage bicycle use as an alternative transportation. I would like to have more garbage bins to encourage keeping the area clean.

How do you think you will be impacted by this project either during or after construction?

My family and I often bike to Creekside this way, I also walk down the route regularly. During construction will suck to lose access to the natural space but after should be worth it. One thing I didn't see addressed is access to Creekside shopping from this area, a direct path would be ideal.



Engage Resource Unit

Phase 2: Hanson Ranch Wetland Improvements / December 2024

We expect to be heavily impacted by construction as our home backs onto the pond. Depending what The City does with the space, we could be greatly affected by night time noise, particularly in the summer.

My home backs on to the wetland. Construction will be disruptive-noise, dust, loss of use of the wetlands. My hope is this short-term issue will have long term benefits-my expectation is the redevelopment will retain the wild nature of the space and it will continue to add value to the neighborhood.

Impact enjoying the wetlands by bike and walking the dog while construction is on.

We will no longer be able to access the wetland area from the Hanson Ranch (north) side. Nose Creek will block access and no bridge is being provided to cross from the north.

If the park is over developed it will ruin what I appreciate about this little natural oasis in the city. Where my family and I can enjoying watching birds, spotting the muskrats swimming in the water and enjoy a refreshing walk away from it all. Long construction will impede all of this.

If you close off the wetlands during construction, I will miss walking through at certain times of the year. During the winter wouldn't impact me, but if you make the changes from April to October, I will be impacted.

Very little impact to me.

South cell is ignored. Original pathway is overgrown - pave it. Original benches buried in the brush. Put them back. It's a stinky algae-filled mosquito farm. Wetland overlook area - beside Hanson Ranch replica house. Clean up weeds and overgrowth of shrubs, replace benches, add educational signs.

Increased property tax???

Birds and wildlife. Peace and quiet.

Traffic going out of neighbourhood during. I will definitely enjoy the wider walkway after and updated design.

Keeping it simple is my priority.

It could be disruptive but with it to have a beautiful community area that is environmentally friendly.



Engage Resource Unit

Phase 2: Hanson Ranch Wetland Improvements / December 2024

Traffic impacts - but I heard this will only be for two weeks at a time, so I can live with that.
Traffic problems as neighborhood is heavy cut thru for Panorama.
After construction would be nice to walk their for a quite evening stroll.
Better walking paths are critical. Also water that flows and does not emit an odor.
Will be good for the environment and community. Water fountain is the best we can do.
I walk my dogs here every day and potentially may need to find other routes.
Wildlife watching opportunities will be less.
This project is a welcome face-lift to a nature space that needs some updates/repairs. Ideally this project will enhance the wetlands for all to enjoy and not disrupt the existing wildlife.
We walk here frequently (2-3 times a week), it is a real solace to see all wildlife and listen to the water. We will miss this spot while the work is done.
We will walk somewhere else during the construction and will be ready to enjoy it when it is done.
It was my understanding the south cell will not be drained for construction. The current high level of algae in the water there will inoculate the the new cell closer to the creek and may not have enough flow to keep it clear. High levels of thistle in the area will overtake the new plantings.
It might be inconvenient during construction but after it will be so much more pleasant for walking or biking. I hope the birds (and muskrats) of the marshlands will find the water flow healthier and therefore we'll enjoy them more.
Walking paths will be limited until after construction, after which I hope there are more trails with greater connection across the community.
I warmly welcome your improvements. We have lived in Hanson ranch for 25 years and see the developer and city fight over the maintenance. The green space behind the homes that back onto the golf course is also not maintained and needs to be. Behind (south) of Hidden Creek Green homes.



Engage Resource Unit

Phase 2: Hanson Ranch Wetland Improvements / December 2024

<p>We back on to the pond so expect that this will interfere with our ability to enjoy any peace and quiet in our yard for the duration. We worry greatly about the impact this project will have on the wildlife that frequent the pond.</p>
<p>Disruption to wildlife. 5 years ago we had many more birds, plovers, avocets, herons, sandpipers, but the water levels were raised and we lost the sand banks, and with that we lost the birds. We have virtually no bats or owls now. Accommodation should be made for these species.</p>
<p>There's plenty of areas to visit, so very little impact.</p>
<p>There will be considerable impact due to where I live Noise trucks etc. If it is left natural I.e.no without changes it will be fine. With proposed changes it will potentially be an invasion of my privacy. When we moved here we were told it was a natural area. Proposed changes make it unnatural.</p>
<p>During if Hidden Creek Drive is impacted. Will use as a walking location after construction.</p>
<p>During it will affect my walking route with our dogs.</p>
<p>No direct impact.</p>
<p>lane closures around the site will cause traffic congestion in our neighbourhood, during the construction phase of the redevelopment plan.</p>
<p>Noise, loss of animal life.</p>
<p>Very positively as it will make Hansen Ranch LOOK like a real community not a freeway for cars from Panorama Hills.</p>
<p>Plan to enjoy the result.</p>
<p>We use this path system almost daily - we hope that it retains large elements of nature and maintains its importance to wildlife.</p>
<p>The traffic will be bad.</p>
<p>It's imperative that wildlife is taken into account. I don't want to see the beavers relocated or harmed. I also want to see the coyotes protected. One of the best things about this area is the wildlife. I'd also like to see more trees planted with flashing to protect from beavers eating them.</p>



Engage Resource Unit

Phase 2: Hanson Ranch Wetland Improvements / December 2024

Not having the pathway while under construction.
Maybe some traffic congestion and not having access to the area. I live close enough that I can see noise being an issue.
I will focus on getting through the construction, and just hoping that the end result aligns with the original vision from when we built our home in Hanson Ranch.
Increase in quality of life.
Walking along the wetlands will likely not be possible during construction but should be improved after. I suspect construction will create new traffic issues.
May not be able to walk the area during construction? But that is okay as there are walk around (like behind the Circle K) and other pathways in this neighborhood, like up the hill.
like the alberta infrastructure signage behind this project, all it will do is add another layer of annoying signs and stupid rules.
We walk this pathway at least weekly - durikg construction, not having access to the area is dissapointing. With that said, I look forward to what the area looks likenonce the improvement project is complete.
I use the pathway often for running and dog walking. Any disruption will affect my fitness routine. Hopefully afterward the pathway retains the ability to use it as a running path and links up to the existing pathway network.
We walk this path at least once per week (mostly during the nesting season) so we will need to find another place to go during these improvements which is totally ok. Our home backs onto this wetland so we are still able to enjoy some of the wildlife in our own back yards.
Minimal impact during construction. After construction, I see myself using this area more than I do currently - I regularly walk my dog on pathways throughout Hidden Valley and Hanson Ranch, and I look forward to using this redesigned area!
"During construction I will have crews noise etc behind my house, likely for months. Invade my privacy.



Engage Resource Unit

Phase 2: Hanson Ranch Wetland Improvements / December 2024

After it appears that it will be an organized man made area. No longer a natural wetland. Keep it simple. Improve what must be done for drainage etc. leave the rest natural. No additional features."

I am worried about the noise from construction not only disrupting the wildlife but also our own homes. I am also worried about losing a daily walking path during construction. After the construction I'm worried about other communities coming and overcrowding the path.

"Lack of access during construction(looks like it will be a long closure) Disruption to wildlife, dust/noise during construction.

I dislike the fact that there will no longer be any fresh water flow, it will be strt runoff cycled through the pond.

Lastly, I expect flooding in the street collection area."

Hoping to have a positive impact if it makes it easier use and enjoy this as a cycle route. Hoping to have a few more locations for sitting and talking on a bench in a natural environment.