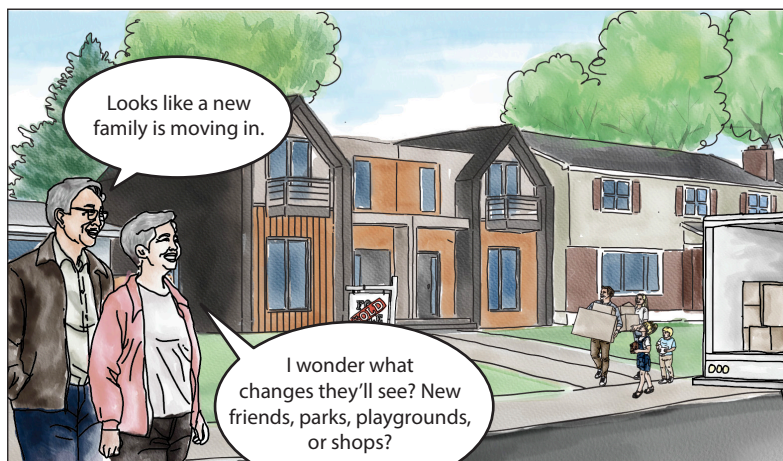
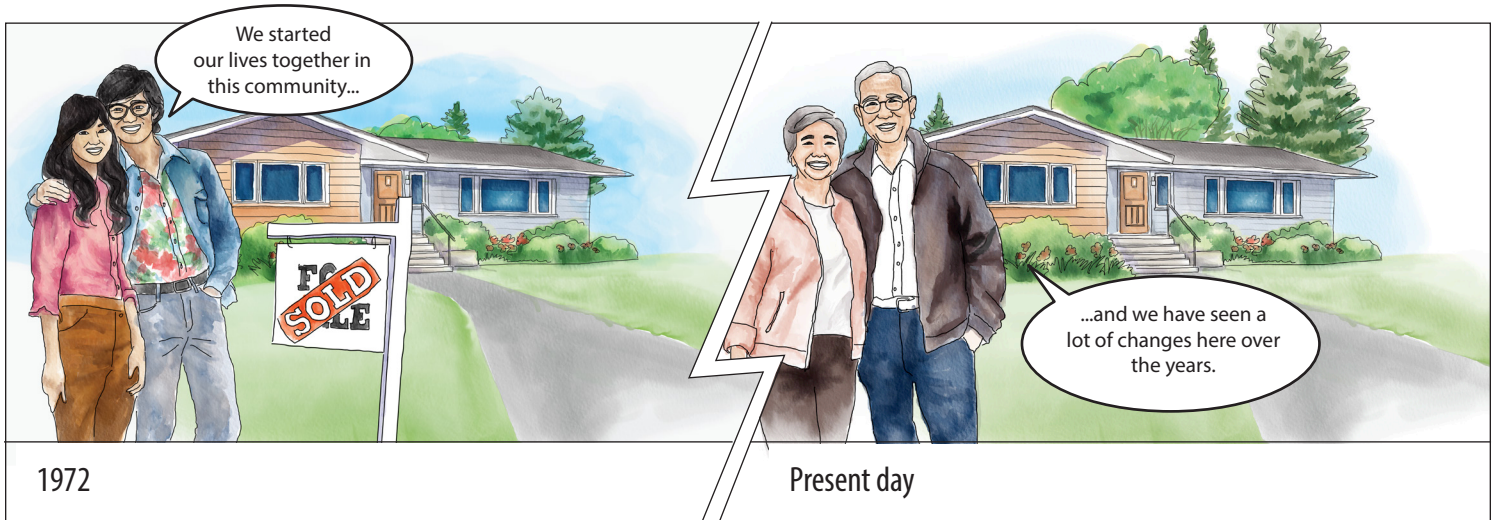


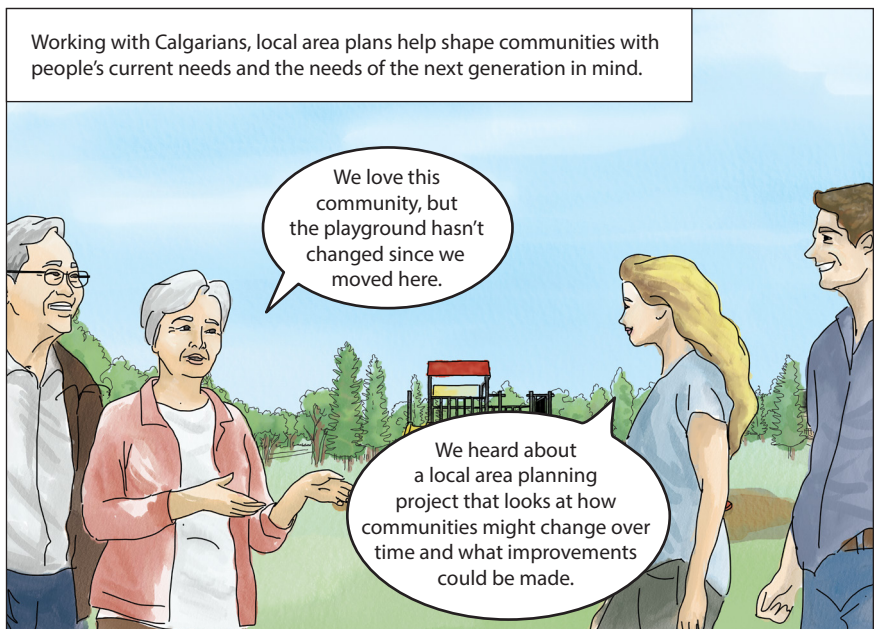
Local Area Planning

Supporting growth and change in our communities

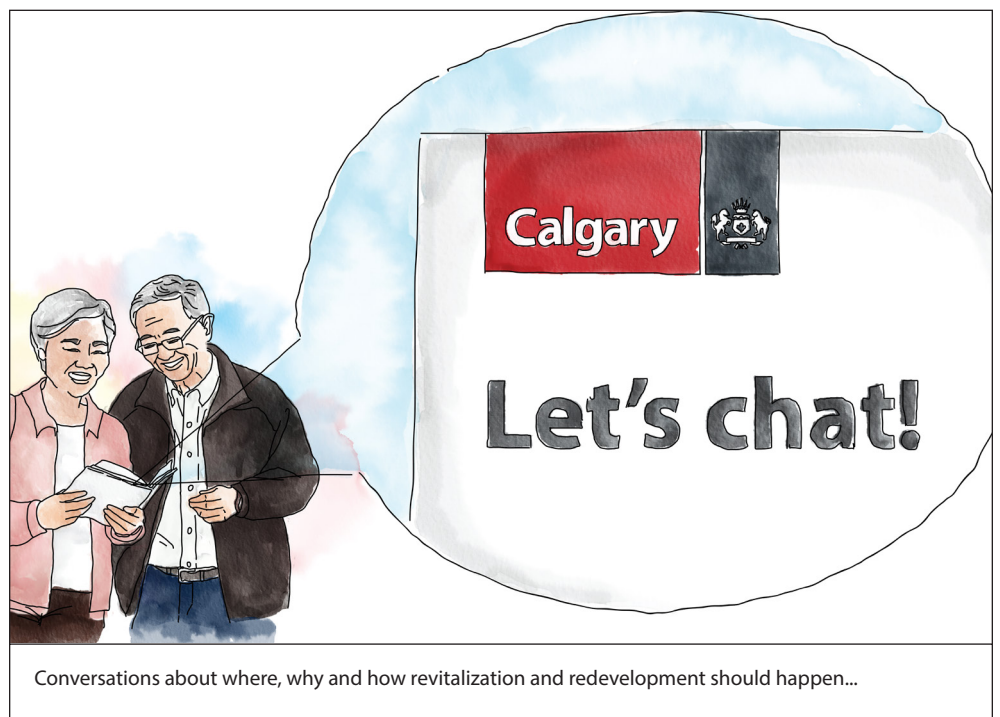




Change will happen naturally with or without a plan in place to help guide it. Local area plans help guide where and how change could happen within communities. If a new home, grocery store or senior residence were proposed, a local area plan outlines where it could fit best.

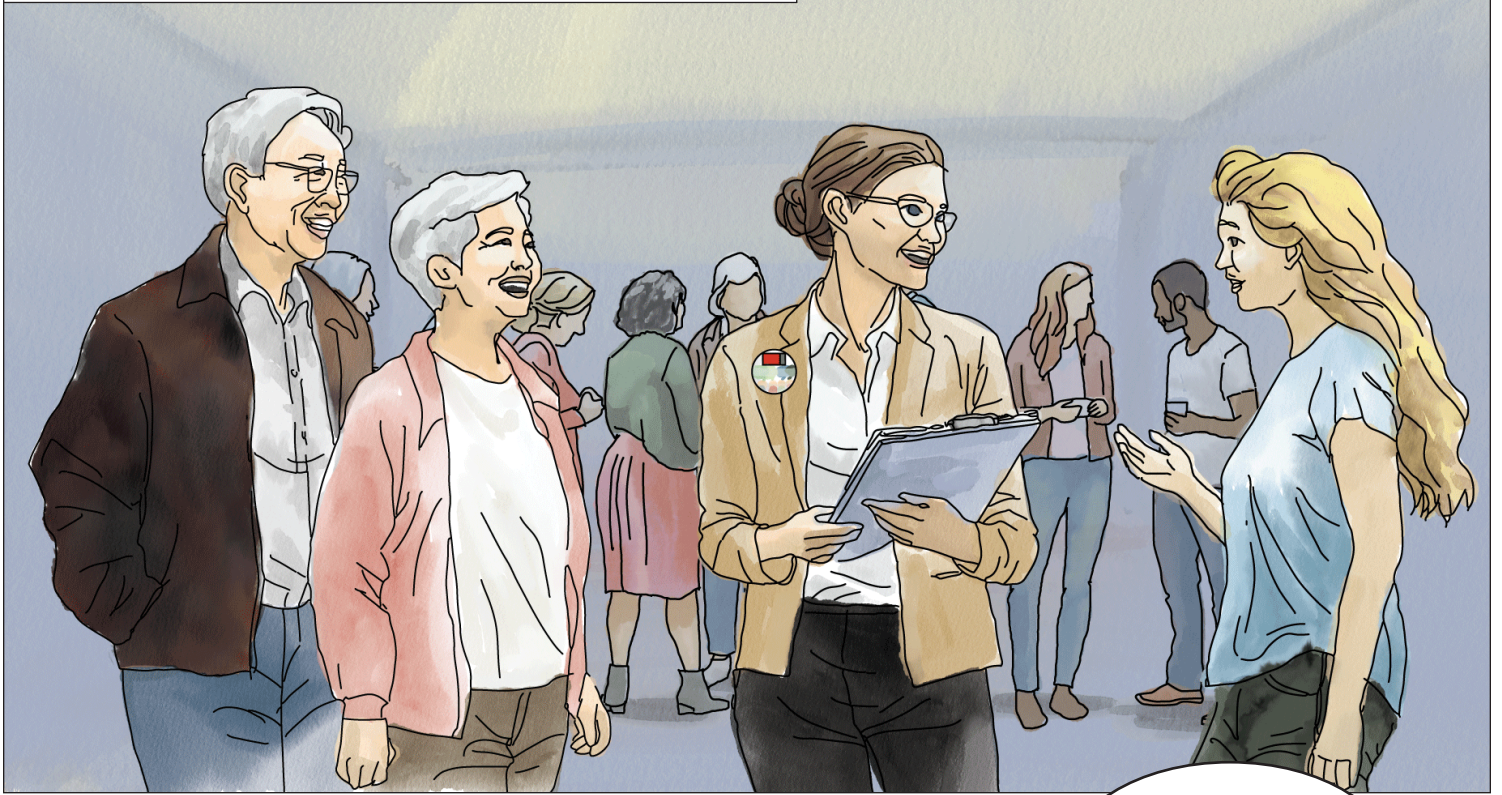


Communities naturally change and evolve.

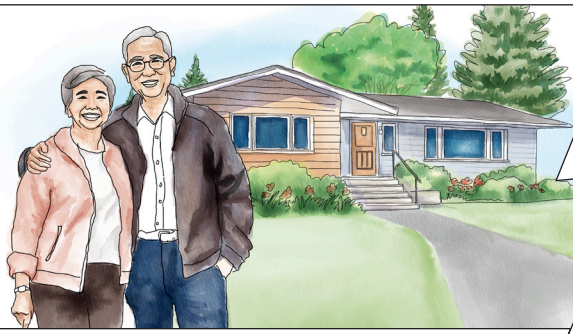


Conversations about where, why and how revitalization and redevelopment should happen...

... give people an opportunity to discuss and help guide change before it happens.



Redevelopment is a natural part of a community's life cycle, which often begins when communities reach a certain age and homes are renovated or replaced. A local area plan can provide housing choices to welcome additional people and support changing needs.



Present day



10 years in the future



I've loved growing up here for the past ten years. Now we have an awesome new park and my favourite ice cream shop that just opened.



Your local area plan will support your community...

...and enhance it's livability and vibrancy for years to come.

