

Registered on : _____

As Number : _____

All Statutory Monuments were placed in the ground between the dates of _____ and _____ and are positioned in accordance with the coordinates shown attached to the instrument, except for the following:

REGISTRAR

REGISTRAR
SOUTH ALBERTA LAND REGISTRATION DISTRICT

PLAN NO. 241 0858

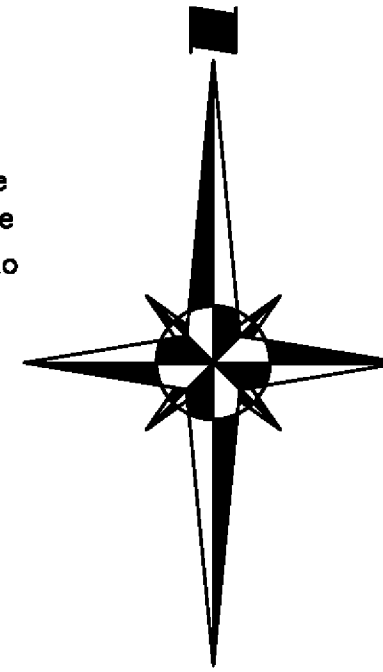
ENTERED AND REGISTERED

ON April 11, 2024

INSTRUMENT NO: 241 093 756

C. Wynne
A.D. REGISTRAR

SHEET 1 OF 1



GREAT PLAINS/STARFIELD CALGARY – ALBERTA

PLAN SHOWING SURVEY OF
SUBDIVISION
OF PART OF THE
S.W.1/4 Sec. 2, Twp. 24, Rge. 29, W.4M.

SCALE 1 : 2000 2024 G.J. FRAME, A.L.S.



LEGEND

- Distances are in metres and decimals thereof.
- Statutory iron post found shown thus
- Statutory iron post planted and marked P217 shown thus
- Alberta Survey Control Marker (ASCM) shown thus
- Area to be registered shown bounded thus
- and contains 27.38 ha.
- Geo-Reference Point shown thus
- Block numbers shown thus
- Lot numbers shown thus
- This plan contains 14 lots including 1 Public Utility Lot.
- Distances on curved boundaries are arc distances.
- All corner radii are 7.50 metres unless shown otherwise.
- Bearings are referred to the NAD83 Alberta Survey Control Grid as defined by the line joining markers 379370 and 335257.
- Datum - North American Datum 1983 (NAD83)
- Projection - 3° Transverse Mercator Projection
- Reference Meridian - 114° W.
- Combined Factor - 0.999740
- Geo-Reference Point is a statutory iron post, coordinate scaled to grid
- Access abbreviated thus
- Above ground level abbreviated thus
- Chord Bearing abbreviated thus
- Counter sunk abbreviated thus
- East abbreviated thus
- Found abbreviated thus
- Hectare abbreviated thus
- Statutory iron post abbreviated thus
- Meridian abbreviated thus
- Mark abbreviated thus
- Marked abbreviated thus
- Marker post abbreviated thus
- North abbreviated thus
- Overland Drainage abbreviated thus
- Point abbreviated thus
- Position abbreviated thus
- Public Utility Lot abbreviated thus
- Radius abbreviated thus
- Re-established abbreviated thus
- Range abbreviated thus
- Right-of-way abbreviated thus
- South abbreviated thus
- Section abbreviated thus
- Township abbreviated thus
- Utility abbreviated thus
- West abbreviated thus
- Central angle of curve shown thus
- The position where statutory iron posts marked P217 are to be planted pursuant to Section 47 of the Surveys Act are numbered thus
- Coordinate positions of the Monuments Found or Placed by this survey, Survey Control Markers used, Reference Monuments installed and the location of all Monuments To Be Placed in accordance with the Section 47 of the Surveys Act, are shown in a Table of Coordinates attached to the Plan Instrument.

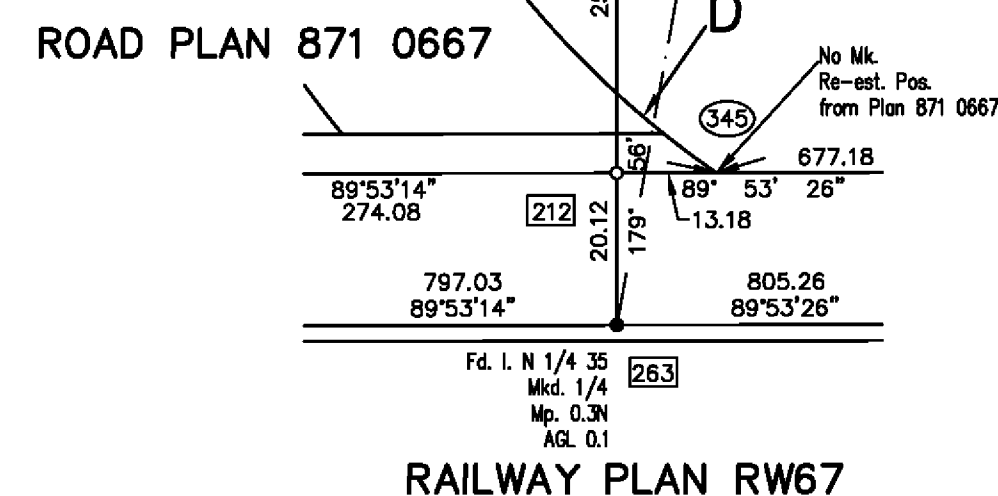
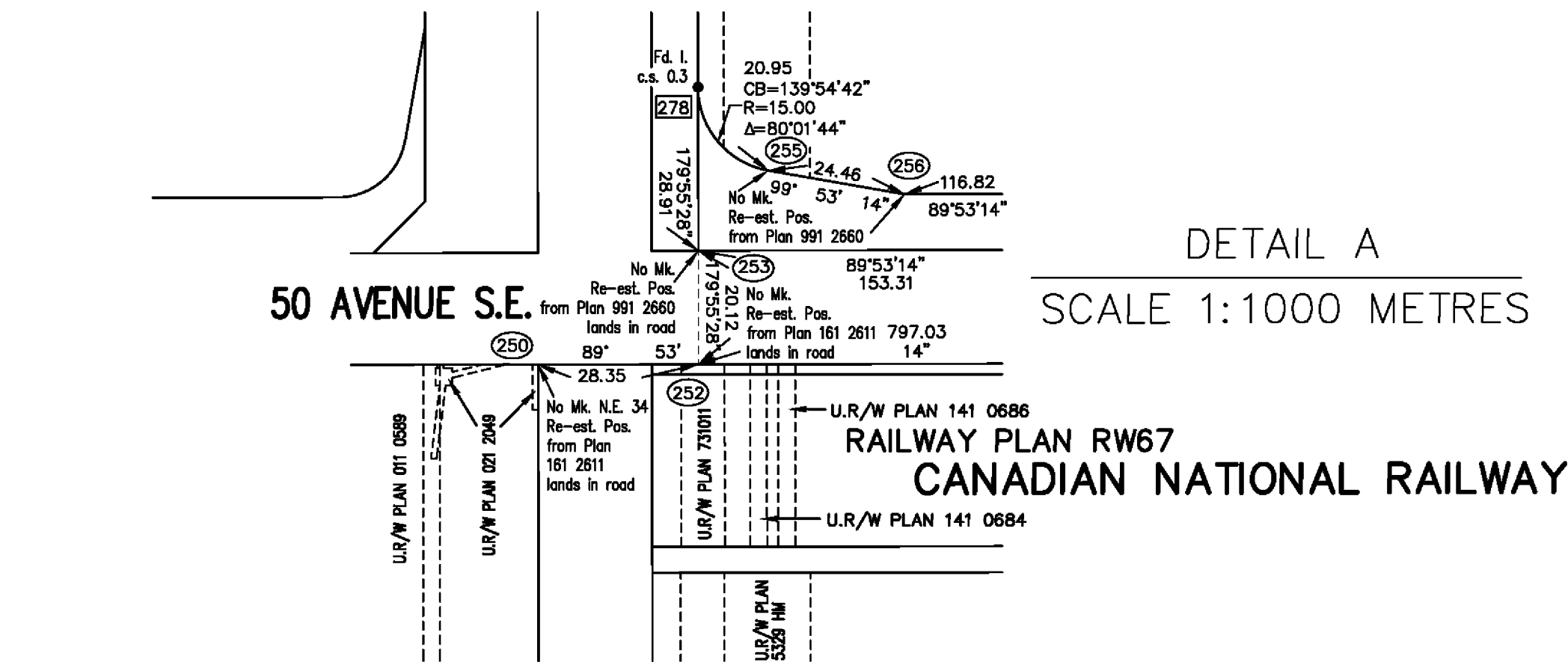
ROAD PLAN 831 0386

10
8
PLAN 981 2641

5
11
PLAN 011 0795

2
PLAN 981 2641

RAILWAY PLAN
RW67



DETAIL B
SCALE 1:1000 METRES

SCHEDULE OF AREAS	
S.W.1/4 Sec. 2, Twp. 24, Rge. 29, W.4M.	27.38 ha
TOTAL	27.38 ha

REGISTERED OWNERS
THE CITY OF CALGARY

SUBDIVISION AUTHORITY
CITY OF CALGARY

C.P.C. File No. SB2022-0367
DATE APPROVED: March 19, 2024

SURVEYOR
Geoffrey J. Frame, A.L.S.
Surveyed between the dates of
August 6th, 2022 and
March 15th, 2024 in accordance with
the provisions of the Surveys Act.



MEASUREMENT SCIENCES INC.
6521 - 48th STREET S.E.
CALGARY, ALBERTA, T2C 5A4
PROJECT: GREAT PLAINS STARFIELD
FILE: 22011-4.DWG