



# Construction Update: Bearspaw South Feeder Main Repair Phase 3

October 16, 2024

The City of Calgary is preparing to begin phase three of repairs to the Bearspaw South Feeder Main, with pre-work scheduled to begin today.

These repairs will take place in three locations: repair site one is located on Parkdale Blvd N.W. between 26 St N.W. and 27 St N.W., repair site two is located on the Memorial Dr westbound off-ramp that connects to Crowchild Trail northbound, and repair site three is located at Brownsea Dr N.W. at the bottom of the Bev Longstaff Pedestrian Bridge ramp.

**These repairs are much smaller in scope and will not require city-wide water restrictions because these sections can be isolated while keeping the feeder main running.**

## Traffic Impacts, Detours and Pathway Closures

### Repair Site One: Parkdale Blvd N.W.

- South side of Parkdale Blvd. N.W. will be closed to vehicle traffic between 26 St N.W. and 27 St N.W.
- Vehicles will be detoured to the North side of Parkdale Blvd N.W. with single lane, two-way traffic maintained.
- Vehicle parking along the North side of Parkdale Blvd. N.W. will be removed between 26 St N.W. and 27 St N.W.
- Regional pathway along the Bow River for both wheeling and pedestrian traffic, will be closed between 27 St N.W. and the crosswalk used to access Kensington Rd N.W.
  - Wheeling traffic will be detoured from 27 St N.W. to 1 Ave N.W. to 25 St N.W.
  - Pedestrian traffic will be detoured to the sidewalk on the North side of Parkdale Blvd N.W.
- Pathway detours come into effect on Thursday, October 17.
- Traffic detours come into effect on Sunday, October 20.

### Repair Site Two: Memorial Dr westbound off-ramp connecting to Crowchild Trail northbound

- The righthand northbound lane on Crowchild Trail N.W. at the Memorial Dr westbound off-ramp will be closed to facilitate the feeder main repair.
- the Memorial Dr. off-ramp to Crowchild Trail will be open but will have a temporary configuration in place. bVehicle speed on Crowchild Trail N.W. will be reduced to 50 km/h.
- Access to the repair site will be provided through the residential community located directly east of Crowchild Trail N.W. via 23 Street N.W. and Broadview Rd N.W.
- Sections of the sound barrier panels adjacent to the Memorial Drive N.W. off-ramp and Crowchild Trail N.W. will be removed to provide access to construction equipment and personnel.
- The local pathway along the sound barrier wall will be closed from Westmount Rd. N.W. to 21 St N.W.
- Pedestrian and wheeling traffic will be detoured through the community along Westmount Rd N.W. to 22 St N.W.
- Parking on the south side of the Broadview Road N.W. and along west side of 23 Street N.W. will be removed to ensure equipment can access the repair location.



# Construction Update: Bearspaw South Feeder Main Repair Phase 3

October 16, 2024

- Pathway detours come into effect on Wednesday, October 16.
- Traffic detours come into effect on Sunday, October 20.

## **Repair Site Three: Brownsea Dr N.W. at the bottom of the Bev Longstaff Pedestrian Bridge ramp**

- Brownsea Dr N.W. will be closed along the southwest section of the road.
- Vehicle access to the back alley north of Brownsea Dr N.W. will be limited to local traffic only.
- Pedestrian and wheeling access to the Bev Longstaff Pedestrian Bridge will remain open, however a temporary ramp will be implemented to detour users away from construction area.
- To gain access to and from the Bev Longstaff Pedestrian Bridge, pedestrian and wheeling traffic will be detoured through the community from Westmount Rd N.W. to 22 St N.W. then to Broadview Rd N.W. to 20 St N.W. and down to Brownsea Dr N.W.
- Pathway detours come into effect on Wednesday, October 16.

## **Construction Impacts**

- Traffic congestion on northbound Crowchild Trail N.W., westbound Memorial Drive N.W., Memorial Drive N.W. northbound off-ramp to northbound Crowchild Trail N.W, and both eastbound and westbound Parkdale Blvd N.W.
- Noise, dust and moderate vibration from equipment
- Use of bright construction spotlights
- Construction vehicles operating on residential roads, including Broadview Rd. N.W., 23 St N.W.
- Contractor staging area, including equipment storage and site offices located in green space at east end of Bowness Road, east of 23 St N.W. This green space will be fenced off and closed for the duration of construction.
- Work hours are anticipated to be 6:30 a.m. – 10 p.m. seven days a week.
- Periodic work into the night as required.
- Pathway closures and detours
- All business and residential access will remain open, but expect increased traffic congestion while work is taking place

## **Next Steps**

Beginning today, crews will be in the repair areas to begin pre-construction work which involves median removal on Crowchild Trail N.W. and Parkdale Blvd N.W., sawing into the pavement, setting up fencing, removal of sound barrier walls and pathway closures. These steps are required before removing sections of the pavement as part of the excavation process to expose the pipe for repairs. Draining and excavation of the pipe are anticipated to begin the week of October 21.

# Construction Update: Bearspaw South Feeder Main Repair Phase 3

October 16, 2024

## Storage Areas and Trailer Locations

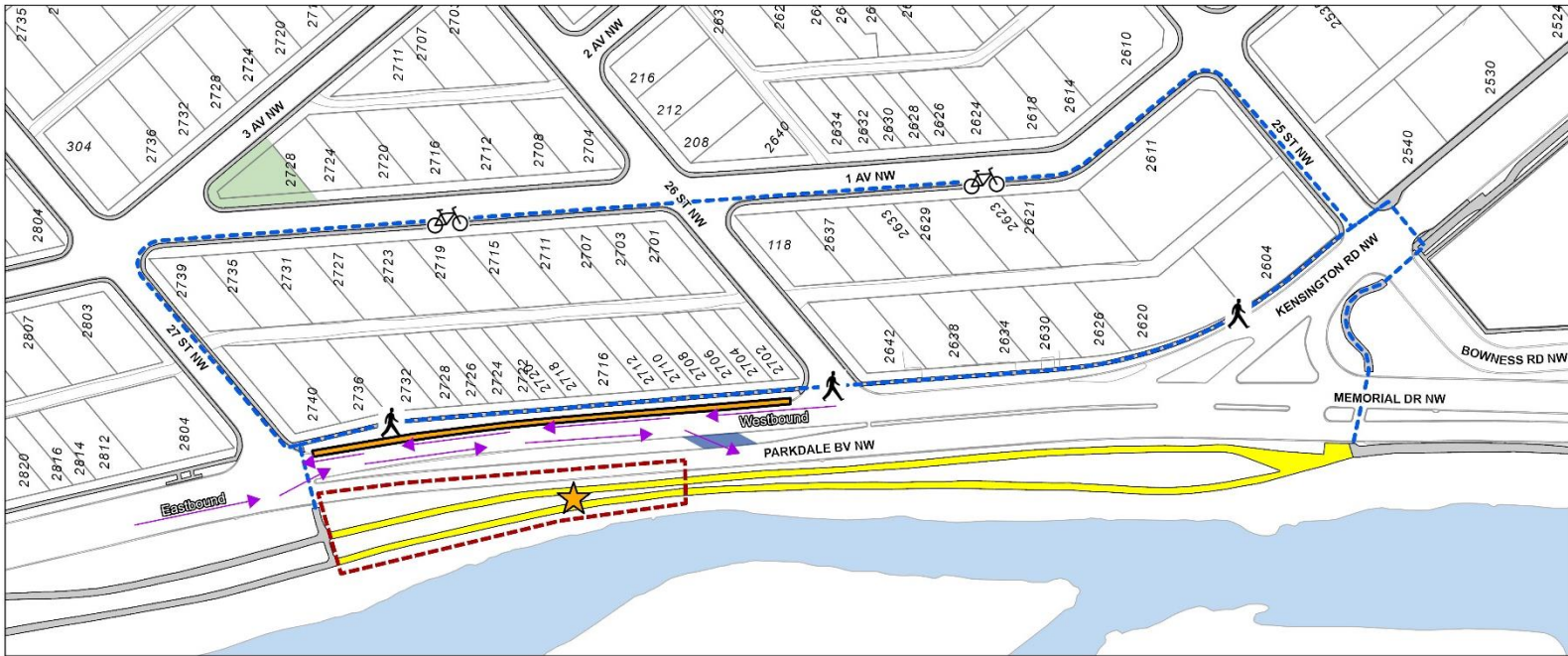
Crews will be setting up an area to store equipment at the greenspace located at the East end of Bowness Rd N.W. east of 23 St N.W. This area will be used to store materials, office trailers and various equipment essential to complete the repairs. Fencing will be installed to ensure the site remains safe and secure.

## Repair Site Map 1



### Bearspaw South Feedermain Repairs – Phase 3 (October 15, 2024)

#### Repair Site 1 Road and Path Closures



- Feedermain Repair Site
- Work Zone
- Traffic Flow
- Temporary Median
- No Parking
- Sidewalk/Pathway
- Pathway Closure
- Pathway Detour
- Parcel
- Hydrology
- Park

Date Printed: October 15, 2024



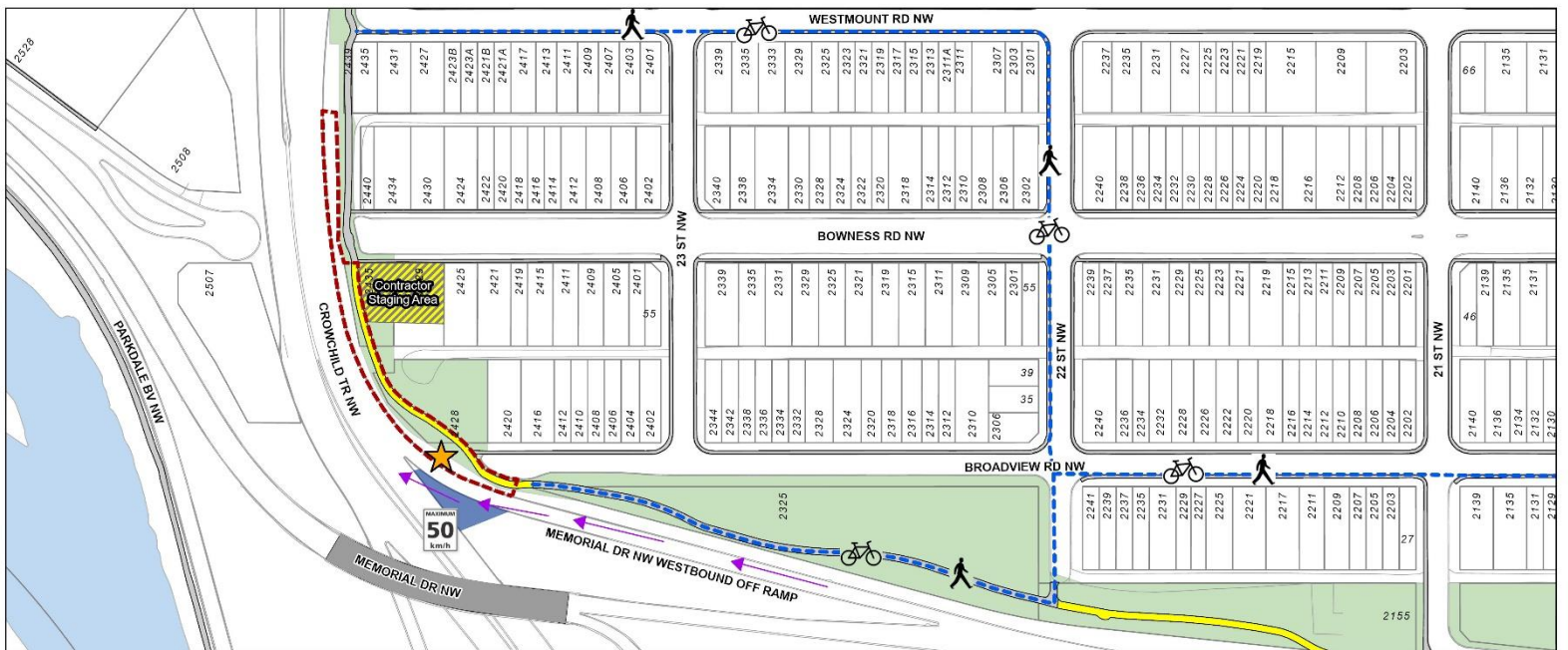
# Construction Update: Bearspaw South Feeder Main Repair Phase 3

October 16, 2024

## Repair Site Map 2

### Bearspaw South Feedermain Repairs – Phase 3 (October 15, 2024)

#### Repair Site 2 Road and Path Closures



- Feedermain Repair Site
- Traffic Flow
- Temporary Median
- Work Zone
- Contractor Staging Area
- Sidewalk/Pathway
- Pathway Closure
- Pathway Detour
- Bridge deck
- Parcel
- Hydrology
- Park

Date Printed: October 15, 2024

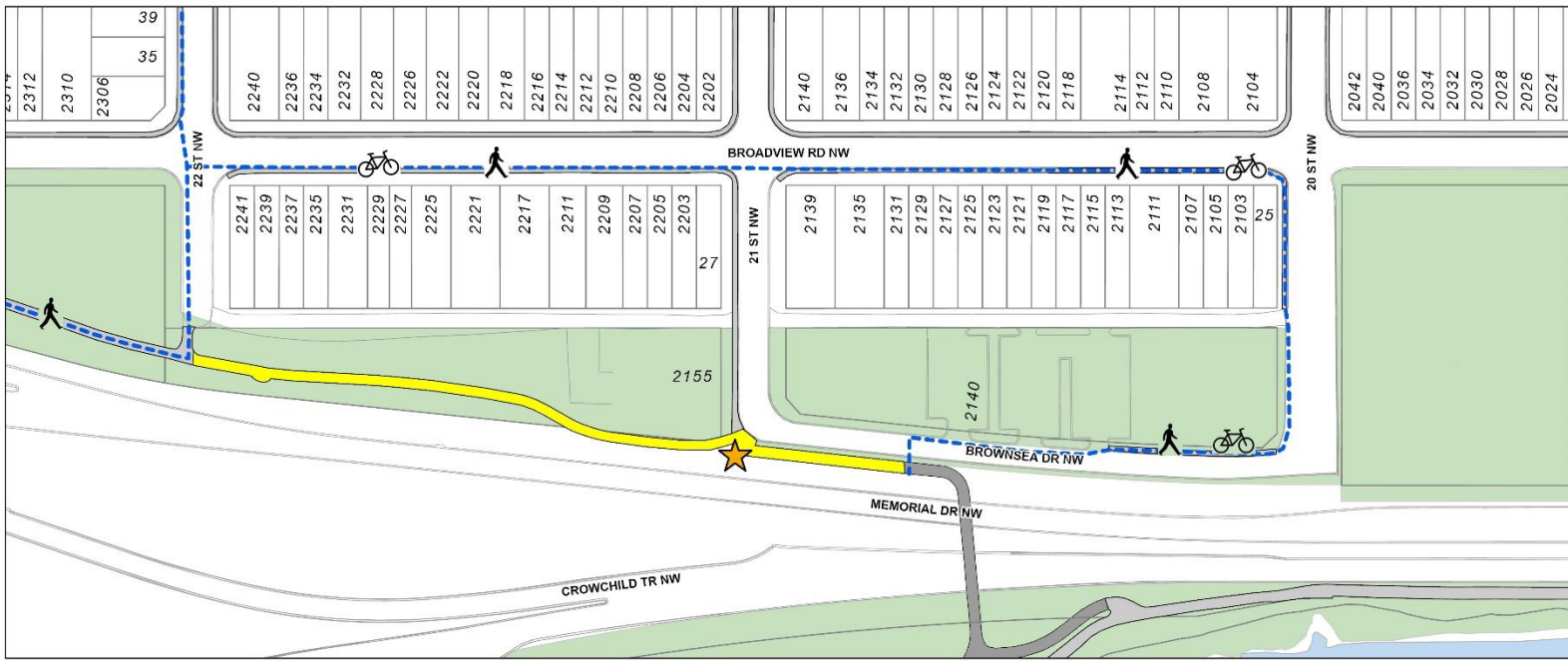
# Construction Update: Bearspaw South Feeder Main Repair Phase 3

October 16, 2024

## Repair Site Map 3

### Bearspaw South Feedermain Repairs – Phase 3 (October 15, 2024)

#### Repair Site 3 Road and Path Closures



- Feedermain Repair Site
- Bridge deck
- Sidewalk/Pathway
- Parcel
- Pathway Closure
- Hydrology
- Pathway Detour
- Park

Date Printed: October 15, 2024

### Project Information or Questions

We will provide regular updates on construction planning, road closures and detours. Sign up for regular updates by scanning the QR code below. Project updates can also be found at [Calgary.ca/watermainbreak](http://Calgary.ca/watermainbreak).

